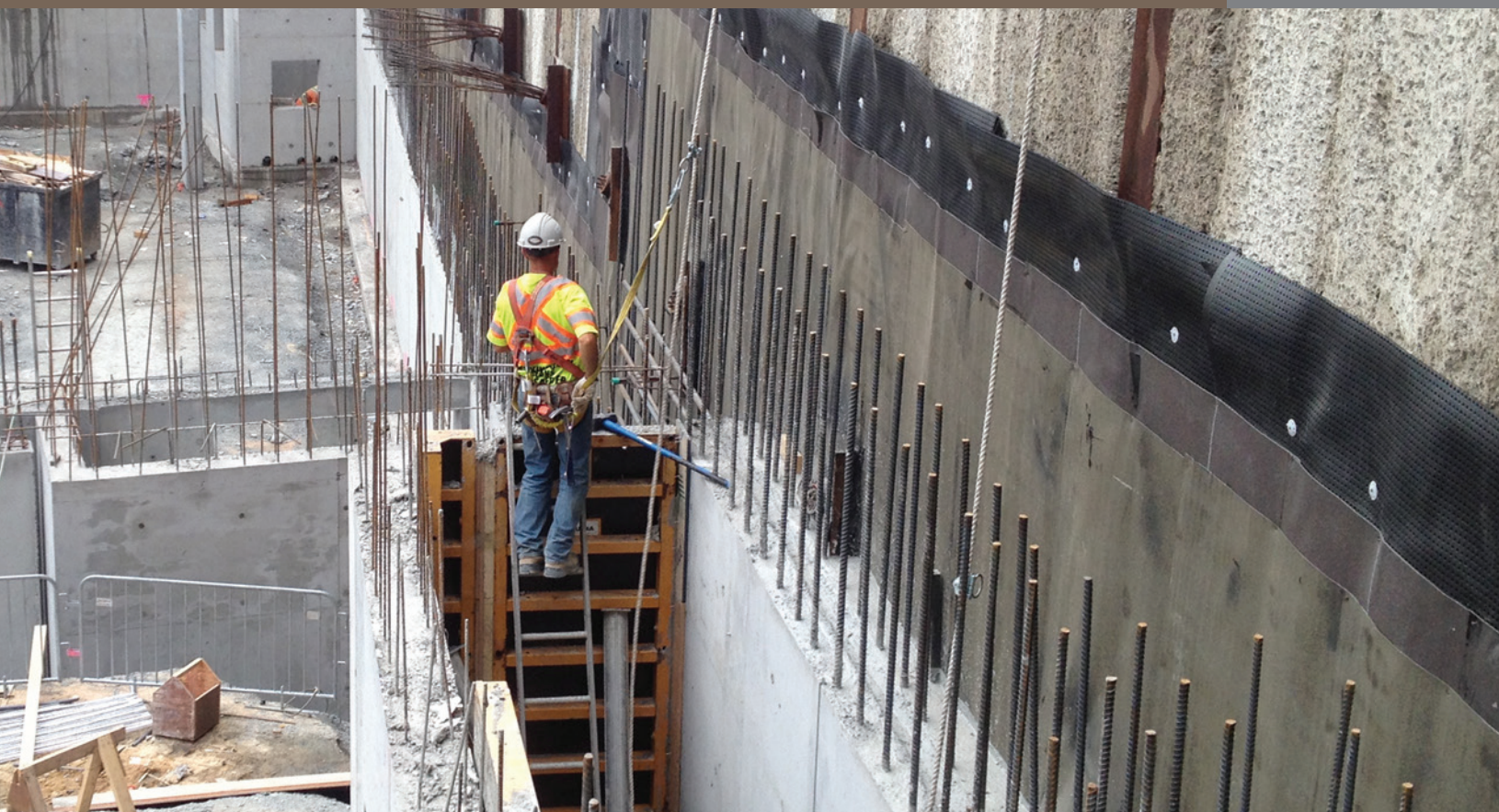




WATERPROOFING

COLPHENE[®] BSW FOUNDATIONS

PRE-APPLIED MEMBRANE SYSTEM DESIGNED
FOR BLIND SIDE WATERPROOFING APPLICATIONS





Marie-Clarac Hospital - Montreal
© 2014. Hôpital Marie-Clarac

COLPHENE® BSW

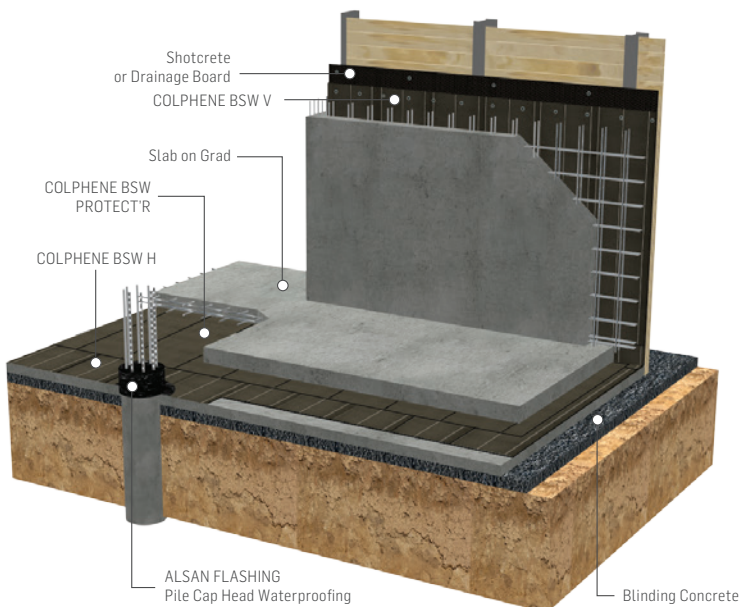
THE IDEAL WATERPROOFING SOLUTION FOR
FOUNDATIONS IN HIGH-DENSITY AREAS

COLPHENE BSW is a fully reinforced pre-applied membrane system designed for horizontal and vertical external blind side waterproofing applications. With its unique design, it can be used near buildings that limit access and excavation.

The membranes are composed of a select blend of high-performance SBS modified bitumen, an ultra-high-strength reinforcement and specially designed top surface.

ADVANTAGES

- Excellent adhesion to poured concrete
- Increased resistance to hydrostatic pressure
- Superior resistance to tears and punctures
- Increased protection thanks to DUO SELVEDGE technology





QUALITY

COLPHENE BSW V

COLPHENE BSW V is designed for vertical blind side waterproofing applications. It is composed of high-performance SBS modified bitumen combined with an ultra-high-strength composite reinforcement. The surface is sanded and the self-adhesive underface is protected with a silicone release film. COLPHENE BSW V features DUO SELVEDGE technology.



COLPHENE BSW H

COLPHENE BSW H is designed for waterproofing applications under horizontal concrete slabs. It is composed of high-performance SBS modified bitumen and a polyester reinforcement. The surface is sanded and the underface is protected with a thermofusible plastic film. Its unique design, including DUO SELVEDGE technology, allows side laps to be heat-welded using a torch or a heat gun.



DIMENSIONS

10 x 1 m (33 x 3.3 ft)

THICKNESSES

3.0 mm (120 mil)

3.5 mm (140 mil)

APPLICATION METHOD

Self-adhesive with heat-welded laps

Loose-laid with heat-welded laps



SUPERIOR ADHESION

The system benefits from the effects of the exothermic reaction that occurs during concrete's curing process, and thus has superior adhesion due to a chemical and mechanical bond between the membrane and structural concrete. It features:

- CONTINUOUS BOND

Continuous and homogeneous bond to structural concrete

- ADHESIVE STRENGTH

Excellent adhesion to the poured structural concrete surface according to ASTM D903 standard

The top face of the membrane is made of SBS modified bitumen and covered with sand. The specially formulated surface softens slightly as the concrete begins to cure, releasing heat. This contributes to the adhesion of the membrane to the concrete, and prevents the ingress or migration of water around the structure.



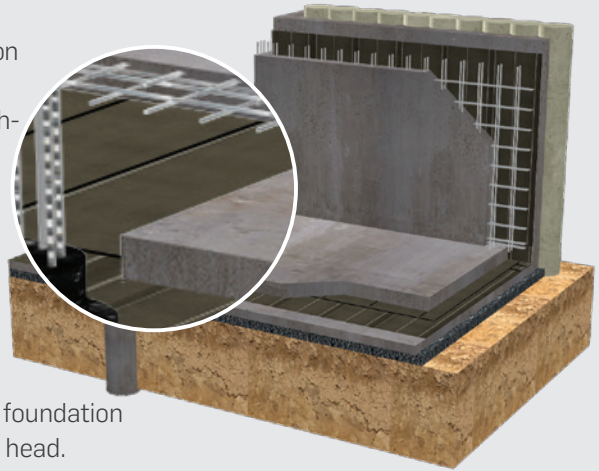
ACCESSORIES

COLPHENE BSW PROTECT'R

COLPHENE BSW PROTECT'R is a fully reinforced protection membrane specially designed for horizontal and vertical blind side waterproofing applications. It is composed of high-performance SBS modified bitumen and an ultra-high-strength composite reinforcement.

BENEFITS

- Protects the COLPHENE BSW H membrane from damage due to foot traffic, rebar installation and material storage to its surface.
- Protects the COLPHENE BSW V membrane when the foundation is located below the water table with high hydrostatic head.



ALSAN FLASHING*

Polyurethane/bitumen liquid waterproofing membrane used in combination with FLASHING REINFORCEMENT for sealing around penetrations.

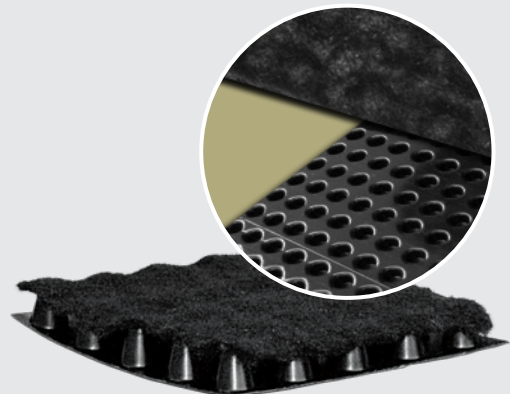
*Available in 3.78 L or 19 L pails

SOPRADRAIN 10-G

High-density drainage panel with a factory-laminated geo-textile. It is used on vertical surfaces before COLPHENE BSW installation.

ADVANTAGES

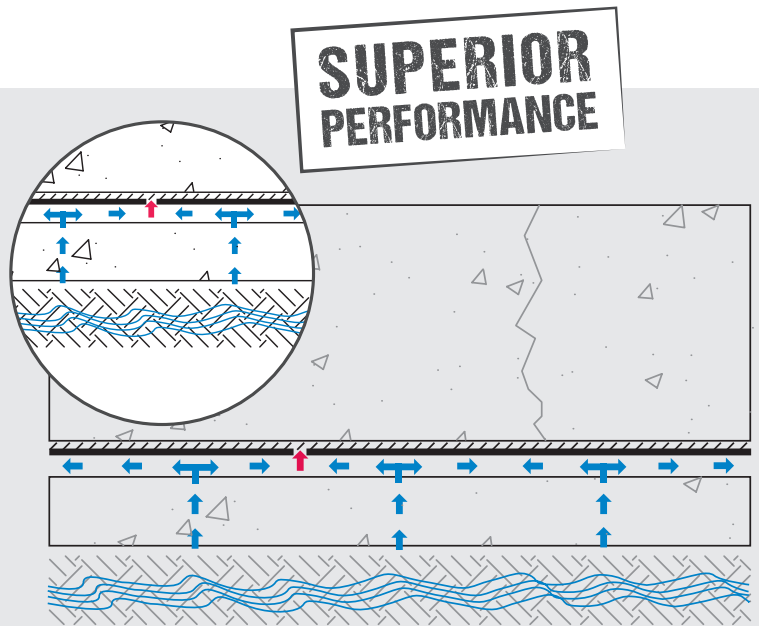
- Promotes better flow toward drains
- Reduces hydrostatic pressure
- Offers consistent flexibility, even in cold weather



CONCEPTS

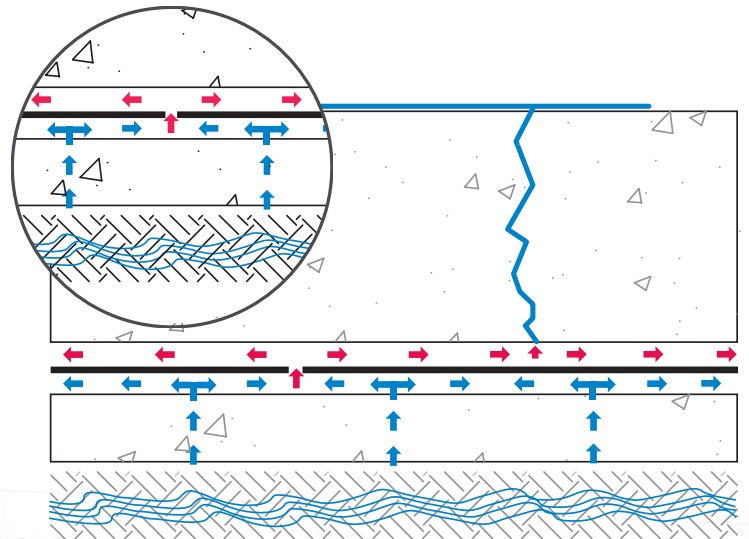
SOPREMA'S SOLUTION : COLPHENE BSW Concept (Pre-applied membrane system that is **fully bonded** to structural concrete)

As it is natural for concrete to crack, it is important to protect it from water infiltration. The technology and concept of COLPHENE BSW ensure the full adhesion of a waterproofing system to the foundation.



OTHER OFFERING ON THE MARKET: Concept of a Conventional Waterproofing System (When **not bonded** to the structural concrete slab)

When there is water migration between the waterproofing membrane and structural concrete, the structure becomes vulnerable, and corrective actions are very costly.



INNOVATION SINCE 1908

SOPREMA has developed around the idea that the quality, durability and reliability of materials must match builders' ambitions and expectations. For more than 100 years, SOPREMA has been using its expertise to develop a variety of high-end products that meet or exceed all the requirements of the construction field.

ROOFS WALLS FOUNDATIONS PARKING DECKS BRIDGES ADDITIONAL EXPERTISE



WATERPROOFING



INSULATION



VEGETATIVE
SOLUTIONS



SOUNDPROOFING



COMPLEMENTARY
PRODUCTS

SOPREMA is an international manufacturer specializing in the production of waterproofing and insulation products, as well as vegetative and soundproofing solutions, for the building and civil engineering sectors.

SOPREMA.US • 1.800.356.3521

SOPREMA.CA • 1.877.MAMMOUTH
