

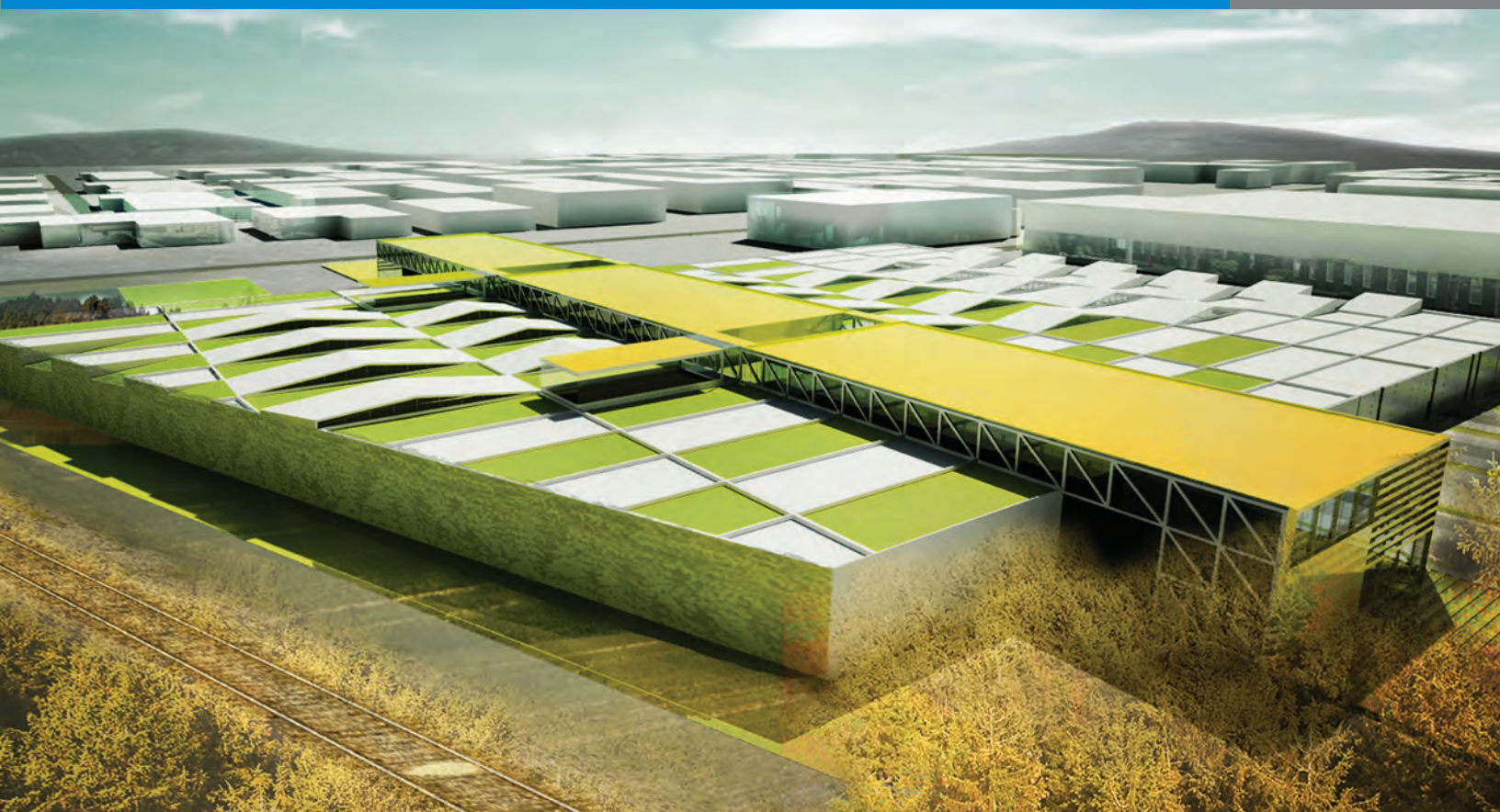


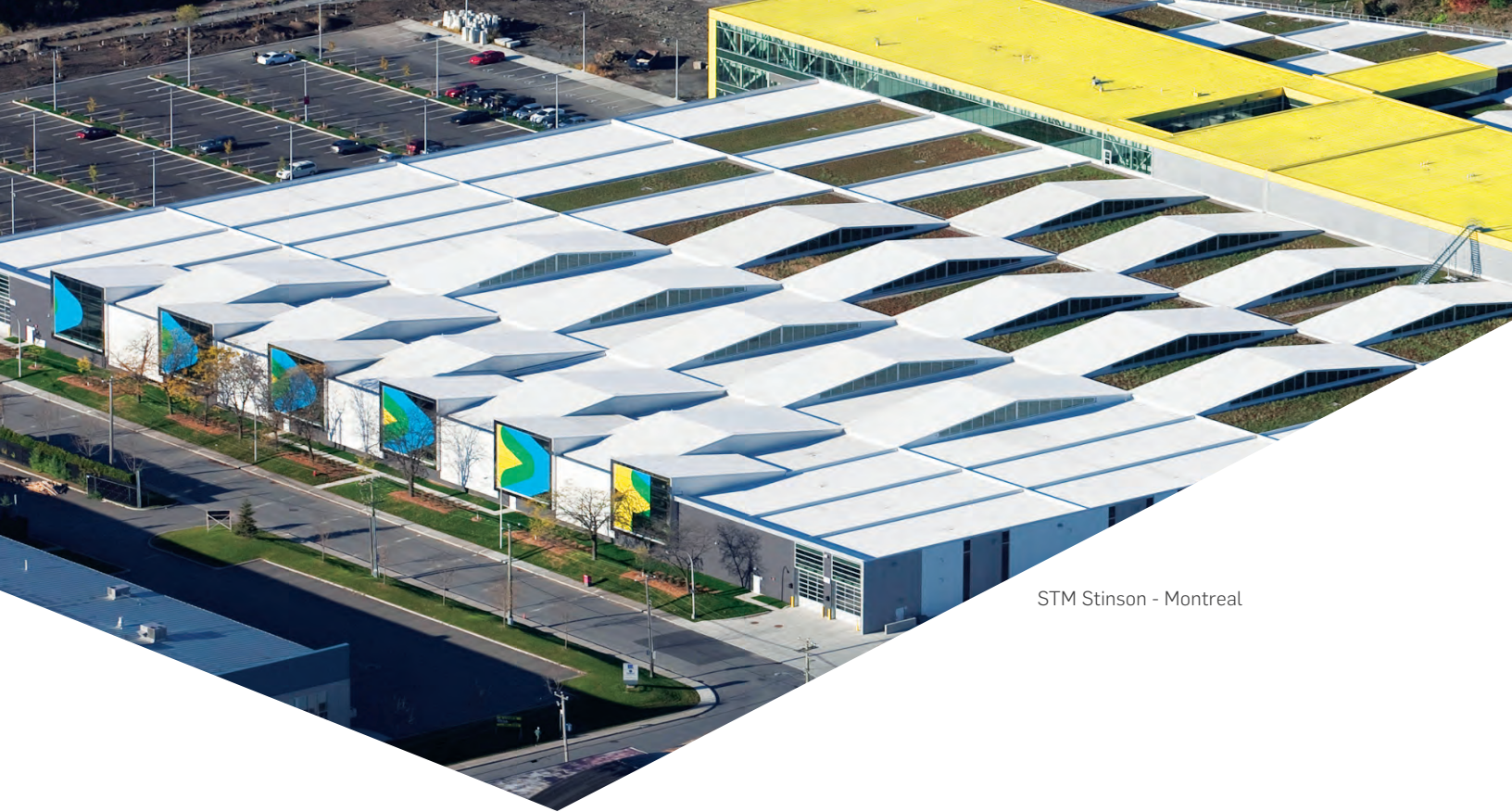
WATERPROOFING

SOPRASTAR[®]

ROOFS

REFLECTIVE ROOFING MEMBRANES





STM Stinson - Montreal

SOPRASTAR®

REFLECTIVE ROOFING MEMBRANES

The SOPRASTAR cap sheet membranes reflect the sun rays, which reduces the temperature of the roof system, thus increasing its life expectancy. The use of SOPRASTAR white membranes contributes to the reduction of heat islands effect.

Moreover, life expectancy of the membrane is potentially extended due to the reduction of heat absorption in the system but also due to the decrease of the roofing system's surface temperature (15 to 20 °C less than other colours¹).

ADVANTAGES

- SRI of 82
- Reduction of heat absorption by the system
- Tested according to CSA A123.21
- Platinum Privilege Warranty for up to 20 years
- Contribution to LEED SS Credit 7.2: Heat Islands Effect

¹ Tests performed at the SOPREMA research and development laboratories.

QUALITY

The reflective granules that cover the SOPRASTAR HD GR membranes protect the elastomeric bitumen from degradation caused by solar heat and UV to preserve its superior flexibility longer. As a result, elastomeric membranes easily adapt to temperature fluctuations, and maintain their performance over time.



HIGH PERFORMANCE SYSTEM

SOPREMA's High Performance roofing systems are designed with one basic criterion: durability.

In order to achieve this, the base sheets or cap sheets of these roof waterproofing systems include composite reinforcement.

PLATINUM PRIVILEGE WARRANTY

As a testimony to the durability of High Performance waterproofing membranes, SOPREMA can offer a PLATINUM PRIVILEGE Warranty. This can extend your warranty period to 20 years!



Maison Symphonique - Montreal
(Credit : Stéphane Brügger)



UQAM - Montreal

THREE DIFFERENT APPLICATION METHODS

GRANULATED MEMBRANES

Cap sheet membranes with a composite reinforcement and covered with highly reflective white granules (SRI of 82)



APPLICATION METHOD

HEAT WELDED

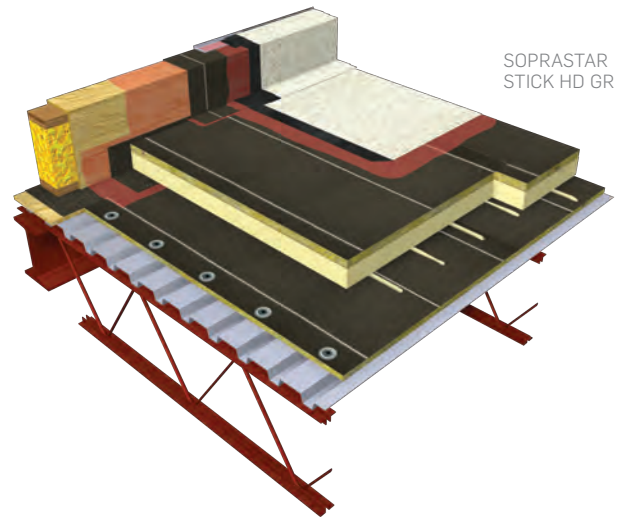
SOPRASTAR FLAM HD GR²

SELF-ADHESIVE

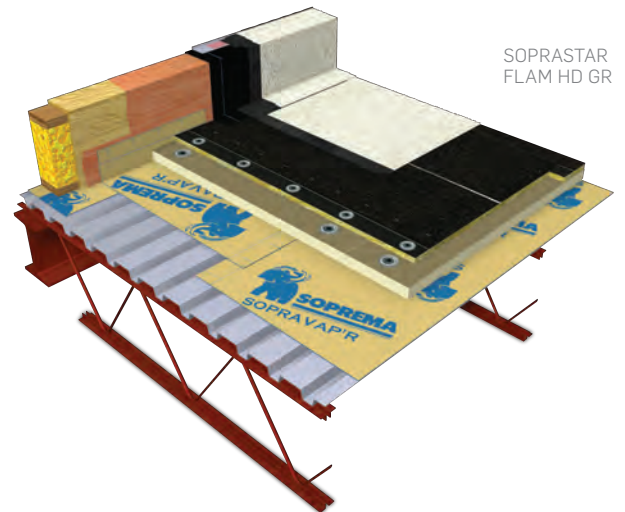
SOPRASTAR STICK HD GR

WITH ADHESIVE OR HOT SEBS BITUMEN³

SOPRASTAR HD GR sanded²



SOPRASTAR
STICK HD GR



SOPRASTAR
FLAM HD GR

DURABILITY

²Fire Rated (FR) cap sheets are also available.

³To learn more about SOPREMA solutions related to adhesives and SEBS hot bitumen, contact your local representative.

TESTS AND APPROVALS

ASTM D6162



SOPRASTAR products tested in accordance with ASTM D6162 comply with the stringent standards recognized in Canada and the USA. The ASTM D6162 Standard evaluates the performance of SBS membranes with composite reinforcement for building roofing or waterproofing. These high standards are unquestionably a guarantee of quality. Please note that the ASTM D4977 test method of this Standard has confirmed that SOPRASTAR membranes do not lose more than 2 grams of granules when subjected to this brushing test.

CSA A123.21⁴



SOPRASTAR systems tested according to CSA A123.21 Standard were subjected from 875 to 2,200 cycles, depending on the application method, reproducing the actual dynamic load conditions due to wind on roofing systems.

FM 4470



Products, such as SOPRASTAR, that receive FM approval have all passed a series of tests, including physical properties (hail, foot traffic, etc.), fire resistance and wind uplift tests (static method). Therefore, FM can then insure systems using SOPRASTAR Products.

CGSB 37.56-M (9th DRAFT)



Canadian General Standards Board (CGSB) is the federal government agency that established this standard. SOPRASTAR membranes, which have successfully met a series of physical and mechanical property tests, meet this required National Building Code standard.

ULC-S107



Underwriters Laboratories of Canada (ULC) is an independent certification and inspection organization performing fire testing on membrane systems to ensure their safety. This certification is very important for a product like SOPRASTAR. Indeed, all roofing membranes must be tested as per ULC-S107 to prove compliance with the National Building Code.

⁴ Standards pertaining to SOPRASTAR FLAM HD GR and SOPRASTAR FLAM HD GR FR membranes only.

INNOVATION SINCE 1908

SOPREMA has developed around the idea that the quality, durability and reliability of materials must match builders' ambitions and expectations. For more than 100 years, SOPREMA has been using its expertise to develop a variety of high-end products that meet or exceed all the requirements of the construction field.

ROOFS WALLS FOUNDATIONS PARKING DECKS BRIDGES ADDITIONAL EXPERTISE



WATERPROOFING



INSULATION



VEGETATIVE
SOLUTIONS



SOUNDPROOFING



ACCESSORY
PRODUCTS

SOPREMA is an international manufacturer specializing in the production of waterproofing and insulation products, as well as vegetative and soundproofing solutions, for the building and civil engineering sectors.

SOPREMA.CA

1.877.MAMMOUTH
