



VEGETATIVE  
SOLUTIONS

# SOPRANATURE®

VEGETATED SYSTEMS

ROOFS

PLAZA DECKS



HALIFAX SEAPORT FARMER'S MARKET, Halifax (Canada)



**SOPREMA®**





## THE SOPREMA EXPERIENCE

For more than 100 years, SOPREMA has put its expertise and its sense of innovation at the service of builders. Every year, thousands of construction professionals from across Canada and around the world choose SOPREMA for its complete product offering, its concern for quality, and above all, for its convivial service.

Constantly listening to construction industry professionals, SOPREMA is recognized as a pioneer for its new product design initiatives that fulfill the needs of its client and ease their workload. In 1995, SOPREMA launched its new SOPRANATURE roofing system, which transforms roofs of all kinds into green spaces while maintaining their waterproofing features.

Innovation at SOPREMA also involves active participation in the development of new industry standards, collaboration on numerous research projects affiliated with universities, and major contributions to the sharing of knowledge to improve the construction industry.



# TECHNICAL SUPPORT AND TRAINING

In Canada alone, SOPREMA has more than 70 technical representatives who are equipped to provide details and specifications, to assist in designing plans, and to advise properly and recommend the best solutions for all projects. In addition, with the installation of SOPRANATURE systems, customers will benefit from SOPREMA's network of certified contractors who employ qualified installers that have completed a comprehensive training on the installation and maintenance of SOPREMA vegetated roof systems. Technical experts may also be mandated to carry out inspection visits to ensure the execution of the work, from start to finish, in accordance with the requirements of the plans and specifications.

## WARRANTIES

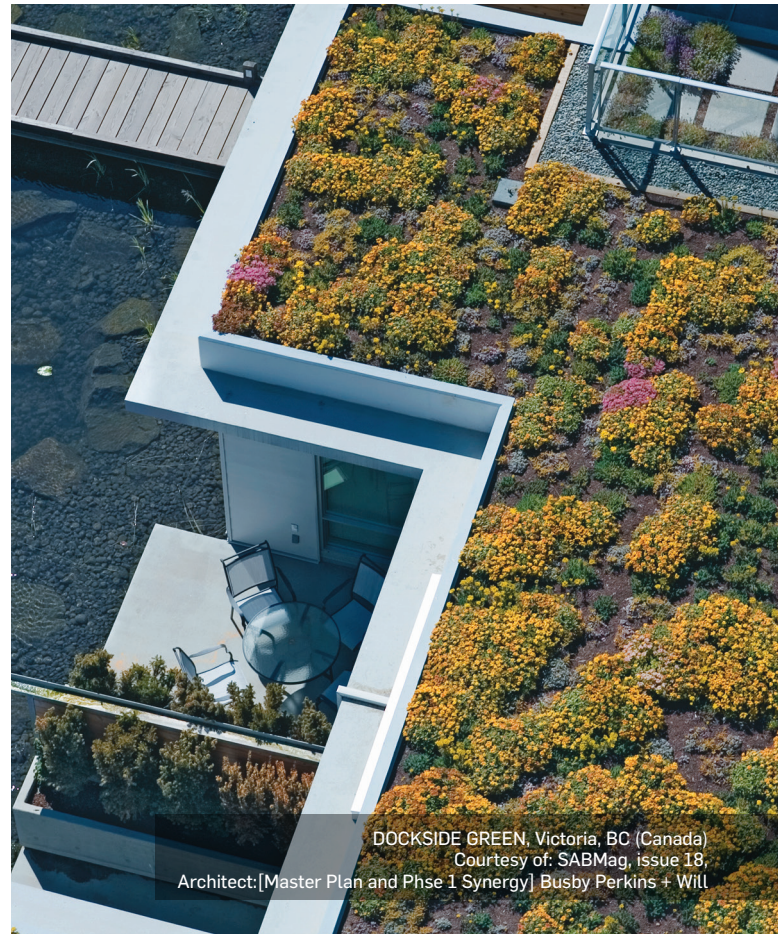
Unique on the market, the Mammoth SOPRANATURE Warranty provides peace of mind to owners who invest in a vegetated roof system.

This warranty is available for roofs that are covered by SOPREMA's Mammoth Platinum Warranty. The Mammoth Platinum Warranty covers the materials and labour of the waterproofing assembly, while the Mammoth SOPRANATURE warranty covers the replacement of the SOPRANATURE vegetated system components provided by SOPREMA.

Under this warranty, if corrective action is required due to water infiltration covered by the Mammoth Platinum Warranty, SOPREMA will provide the owner with the materials and labour to remove and reinstall the SOPRANATURE vegetated system.

## LEED® V4 AND WELL V2

A vegetated roof can contribute to obtaining credits towards Leadership in Energy and Environmental Design (LEED®) and WELL certification, according to the terms and conditions of the various programs and categories involved.







## **BENEFITS FOR COMMUNITIES**

---

SOPRANATURE vegetated systems offer a wide variety of social, economic and environmental benefits to communities. In addition to replacing mineral surfaces with permeable and living surfaces within the building, they compensate for the loss of ecosystem services caused by urban development.

### **MITIGATE THE EFFECTS OF URBAN HEAT ISLANDS**

Due to the evapotranspiration of the plants and the shading they provide, vegetated roofs promote natural control of the outside temperature.

### **INCREASE URBAN BIODIVERSITY**

SOPRANATURE systems create conditions promoting the development of microhabitats to support life. They can offset the loss of natural heritage and increase connectivity between ecosystems in the area.

### **SUPPORT A LOCAL DIET**

Depending on the type of development, SOPRANATURE systems can accommodate urban agriculture, meaning access to fresh, locally produced healthy foods.

### **SUPPORT EDUCATION AND CULTURE**

Vegetation enhances the attractiveness of school and cultural environments by creating a climate conducive to concentration, creativity and learning. It also makes it possible to combine theoretical with practical notions.

### **REDUCE AIR POLLUTION**

Vegetated roofs help improving the quality of outdoor air by removing certain contaminants such as dust particles, acting as carbon sinks and oxygenating living environments.

### **IMPROVE STORMWATER MANAGEMENT**

SOPRANATURE systems have a capacity of absorption, retention and filtration of water. They improve stormwater management while helping to reduce the risks associated with overflows and floods.

### **MITIGATE NOISE POLLUTION**

SOPRANATURE systems improve acoustic comfort thanks to their soundproofing capability. They also help mitigate the negative perceptions associated with environmental noise.

### **PREVENT PUBLIC HEALTH RISKS**

Being able to integrate urban greening strategies, vegetative solutions contribute to preventing the risks related to certain physical and/or mental diseases. They can also improve lifestyle and increase the well-being of individuals.





## THE PORT OF MONTREAL'S GRAND QUAY

2017

"The Port of Montreal's Grand Quay, designed in collaboration with Provencher Roy Architectes, is now able to accommodate a growing number of cruise ships. Montrealers, cruise passengers and tourists can now enjoy contemporary infrastructure and public spaces that reflect this iconic location. The landscaping project highlights the richness of the industrial heritage through connections with existing structures. The green roof allows flexibility of use and puts forward the principles of ecological planning, while offering a unique point of view on the river, the islands and the City."

- Josée Labelle, Associate Landscape Architect at NIP PAYSAGE







LES TERRASSES CAP-À-L'AIGLE  
Baie-Saint-Paul (Canada)

## BENEFITS FOR THE OWNER

SOPRANATURE vegetated systems represent a wide variety of socioeconomic opportunities for the building owner. In addition to being synonymous with added value, they offer several benefits that can help improve the building's performance and meet the needs of occupants.

### IMPROVE THE THERMAL EFFICIENCY OF THE BUILDING

SOPRANATURE systems are among the best solutions in the improvement of energy efficiency which can thus generate savings in the operational costs of the building.

### OPTIMIZE THE USE OF AVAILABLE SPACE

Vegetated solutions optimize the use of space by displaying a wide range of possibilities. The addition of more functional space on the roof can take the form of a terrace and even a garden.

### IMPROVE THE AESTHETICS OF THE BUILDING

SOPRANATURE systems improve the quality of the living environment by highlighting nature as an architectural component of the building. It helps beautify the living environment and enhance the real estate heritage.

### INCREASE THE ATTRACTION CAPACITY

Vegetated solutions can boost the appeal of a building for customers, occupants or employees by promoting a sense of pride and making them see how the owner meets their needs and values.

### FOSTER THE WELL-BEING OF THE OCCUPANTS

SOPRANATURE systems increase the thermal and acoustic comfort of the occupants. In addition to having positive effects on health and well-being, they increase people's contact with nature, which contributes to their happiness, productivity and openness to collaboration.

### EXTEND THE LIFE OF THE ROOF MEMBRANE

By acting as an additional protective layer, the vegetated surface extends the service life of the roof's waterproofing system.

### STRENGTHEN SOCIAL SOLIDARITY

Some developments with vegetated solutions can become attractive meeting and recreation venues for individuals to foster socialization and strengthen a sense of belonging to a group or community.

### REINFORCE THE APPROACH TO SUSTAINABLE DEVELOPMENT

SOPRANATURE systems are excellent ways to respect values, deliver on commitments and support a long-term vision of sustainable development.







# MUSÉE NATIONAL DES BEAUX-ARTS DU QUÉBEC

## 2016

"The green roofs of the Pierre-Lassonde Building are where art and nature unite. Seen from above, they give the impression that the building arose naturally between the city and the park. Few people know that the 90,000 plants growing on these roofs create curves that relate to the surrounding terrain and change colours with the seasons, just like the flora of the Battlefields Park. From the Contemporary Art Room on the second floor, visitors can enjoy a sweeping view of the green roof and the garden; on the third floor, they can even continue their visit by enjoying the outdoor terrace. Come, unwind and contemplate our green roofs; it's a natural way to recharge your batteries."

- Annie Bérubé, Assistant General Manager

MUSÉE NATIONAL DES BEAUX-ARTS DU QUÉBEC



LES TERRASSES CAP-À-L'AIGLE  
Baie-Saint-Paul (Canada)



MUSÉE NATIONAL DES BEAUX-ARTS DU QUÉBEC, Quebec (Canada)  
Courtesy of the MNBAQ, photo: Bruce Damonte



# SYSTEMS OPTIONS

Whether modular or built on site, SOPRANATURE systems offer great green roof design flexibility tailored to your needs. Our systems have been designed to meet the normative requirements and environmental challenges of the Canadian climate.

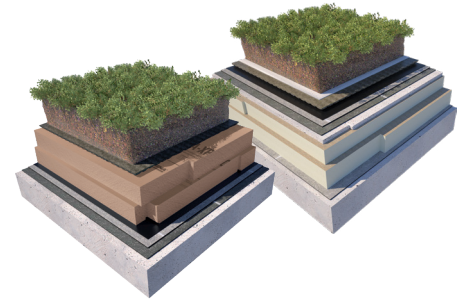
See our legend to better understand the characteristics of each of our systems.

| LEGEND           | Costs                   | Maintenance | Water retention | Weight      | Irrigation needs |
|------------------|-------------------------|-------------|-----------------|-------------|------------------|
|                  |                         |             |                 |             |                  |
| Vegetation types | Ground covers and grass | Perennials  | Shrubs          | Agriculture | Trees            |

## EXTENSIVE SYSTEM

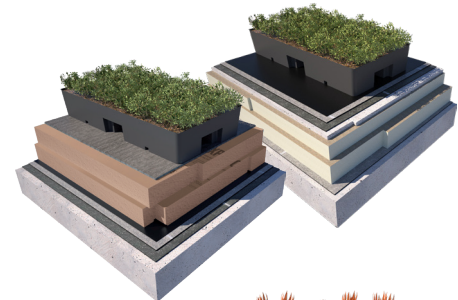
SOPRANATURE extensive systems are light green roofs of less than 150 mm of SOPRAFLOR substrate.

Vegetation types typically include sedums, grasses and other perennials requiring low maintenance.



## MODULAR SYSTEM

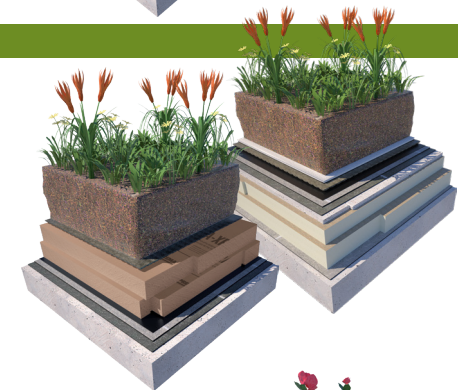
SOPRANATURE modular systems create a versatile vegetated roof solution. The trays form an all-in-one pre-vegetated system. They save time and manpower by being easy to install.



## SEMI-INTENSIVE SYSTEM

SOPRANATURE semi-intensive systems are mid-light green roofs with 150 mm and 300 mm SOPRAFLOR substrates.

Vegetation types typically include sedums, grasses, perennials, shrubs and even some plants for urban agriculture.



## INTENSIVE SYSTEM

SOPRANATURE intensive systems correspond to heavy green roofs with more than 300 mm of SOPRAFLOR substrate.

Vegetation types can include a wide variety of perennials, shrubs and trees that require frequent maintenance and heavy structural capacity.





### TABLE OF THE SOPRANATURE PRODUCT OFFERING

| COMPONENTS        | PRODUCTS                  | CONVENTIONAL ROOF | INVERTED ROOF | PLAZA DECK |
|-------------------|---------------------------|-------------------|---------------|------------|
| GROWING SUBSTRATE | SOPRAFLOR X               | X                 | X             | X          |
|                   | SOPRAFLOR I               | X                 | X             | X          |
|                   | SOPRAFLOR P               |                   |               | X          |
| CAPILLARY MAT     | SOPRARETENTIO MAT 5       | X                 | X             | X          |
|                   | SOPRARETENTIO MAT 8       | X                 | X             | X          |
| GEOTEXTILE        | SOPRAFILTRE               | X                 | X             | X          |
| DRAINAGE PANEL    | SOPRADRAIN ECO-5          | X                 |               | X          |
|                   | SOPRADRAIN ECO-VENT       |                   | X             | X          |
|                   | SOPRADRAIN GEO-M          | X                 |               |            |
| INSULATION        | SOPRA-XPS                 |                   | X             | X          |
| SEALING TAPE      | SOPREMA APPROVED TAPE     | X                 | X             | X          |
| ROOT BARRIER      | SOPRABARRIER 20           | X                 | X             | X          |
|                   | SOPRABARRIER 30           | X                 | X             | X          |
| MODULAR TRAY      | *SEVERAL OPTIONS POSSIBLE | X                 | X             | X          |
| SEDUM MAT         | *SEVERAL OPTIONS POSSIBLE | X                 | X             | X          |

\*Contact your SOPREMA representative for more details.

## ACCESSORY PRODUCTS

AVAILABLE ON DEMAND

- Paver pedestals
- Aluminum trim
- Inspection Chamber
- Slope corrector

MAISON DES ARTS DESJARDINS DRUMMONDVILLE,  
Drummondville (Canada)





## MOUNTAIN EQUIPMENT CO-OP

1998

"Three stories up from the world of asphalt and traffic MEC staff walk out onto a beautiful rooftop patio and are surrounded by a natural green garden, they inhale and take a refreshing break away from the busy store environment. Our green roofs are like a private rooftop park; staff may even pick some fruits or veggies! Many don't realise that it is also reducing the contribution of heat built-up by the sea of roofs in the city, and is kept watered just using collected rain."

– Brent Palmer, Director of Facilities

MOUNTAIN EQUIPMENT CO-OP



MOUNTAIN EQUIPMENT CO-OP,  
Toronto (Canada)



MOUNTAIN EQUIPMENT CO-OP,  
Toronto (Canada)





QUEBECOR, Montreal (Canada)  
Photo: Jean-Guy Lambert



## INNOVATION SINCE 1908

---

SOPREMA has developed around the idea that the quality, durability and reliability of materials must match builders' ambitions and expectations. For more than 100 years, SOPREMA has been using its expertise to develop a variety of high-end products that meet or exceed all the requirements of the construction field.



---

SOPREMA is an international manufacturer specializing in the production of waterproofing and insulation products, as well as vegetative and soundproofing solutions, for the building and civil engineering sectors.

---

**SOPREMA.CA**

**1.877.MAMMOUTH**

---