

ARMONIA3D
by **SOPREMA**

SWIMMING POOL
WATERPROOFING
SOLUTION

ARMONIA 3D



SOPREMA
GROUP

ARMONIA^{3D}
by SOPREMA

PREMIUM BRAND

PVC REINFORCED
1,5 and 1,8 mm



THE PLUS

+ visual appeal

+ easy setting

+ sensorial
experience

SOPREMA, world leader in waterproofing solutions, introduces its new reinforced PVC membranes **Armonia 3D**. The line **Armonia 3D** has been conceived aiming at replicating the feeling and the aesthetic aspect of mosaics and natural materials. Its embossed patterns, with a great visual appeal, are combined with the traditional benefits of reinforced PVC liner: quick and easy setting, and a great protection and waterproofing capacity.

FOUR-LAYER MEMBRANE

Reinforced PVC synthetic membrane composed of 4 layers of different complementary formulations, introducing a polyester reinforcement between the second and third layer.

This grid guarantees excellent tensile strength properties and very high dimensional stability.

« BIO-SHIELD » TREATMENT

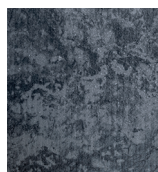
It helps to protect the membrane against micro-organism growth and prevents molecular changes.

WARRANTY

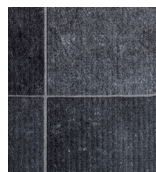
The products of the line **Armonia 3D** are guaranteed for 10 years.



Sensitive Grey



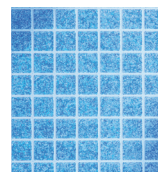
Sensitive Black



Sensitive Bali



Mosaic White



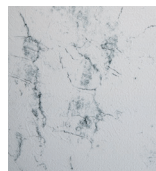
Spirit Ceram
Blue



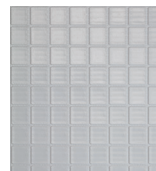
Sensitive Dune



Sensitive Sand



Sensitive White



Mosaic
Pearl Grey



Spirit Ceram
Grey

TECHNICAL DATA SHEET

PRODUCT

Synthetic membrane for the internal covering of swimming pools.

CURRENT STANDARD

Synthetic membrane in plasticized PVC made by spreading, reinforced with polyester mesh, with nominal thickness of 1.5 mm (Mosaic and Spirit Ceram) and 1.8 mm (Sensitive). **The superficial finishing of Sensitive membranes has slip prevention according to the European standard EN 15836 and DIN 51097.** Produced according to the European standard EN 15836-2 (2010).

STORAGE

Rolls should be stored horizontally in their original packages, in a dry and temperate area (10-30°C).

		MOSAIC 150	SPIRIT CERAM 150	SENSITIVE 180	Test method
Thickness	(mm)	1,50	1,50	1,80	UNI EN 1849-2
Width	(m)	1,65	1,65	1,65	UNI EN 1848-2
Length		≥ nominal value	≥ nominal value	≥ nominal value	UNI EN 1848-2
Flatness	(mm)	≤ 10	≤ 10	≤ 10	UNI EN 1848-2
Straightness	(mm)	≤ 30	≤ 30	≤ 30	UNI EN 1848-2
Air mass	(kg/m ²)	1,80	1,80	2,10	UNI EN 1849-2
Water absorption (168 hours at 23 ± 2°C)	(%)	≤ 1,0	≤ 1,0	≤ 1,0	EN ISO 62 met. 1
CaCO ₃ content	(%)	≤ 3,0	≤ 3,0	≤ 3,0	EN 15836 - 2 Ann. A
Resistance to traction	(N/5 cm)	≥ 1100	≥ 1100	≥ 1100	UNI EN 12311-2 met. A
Mesh elongation to rupture	(%)	≥ 15 and ≤ 30	≥ 15 and ≤ 30	≥ 15 and ≤ 30	UNI EN 12311-2 met. A
Tear resistance	(N)	≥ 180	≥ 180	≥ 180	UNI EN 12310-2
Dimension stability	(%)	≤ 0,5	≤ 0,5	≤ 0,5	UNI EN 1107-2
Cold bending	(°C)	≤ -25	≤ -25	≤ -25	UNI EN 495-5
Resistance to welding peeling	(N/5cm)	≥ 80	≥ 80	≥ 80	UNI EN 12316-2
Resistance to artificial aging: - exposure of 648 MJ/ m ² to UV between 300 and 400 nm - contrast level according to greys scale		≥ 3000 hours ≥ degree 3	≥ 3000 hours ≥ degree 3	≥ 3000 hours ≥ degree 3	EN ISO 4892-2 met. A - cycle n°1 EN 20105 - A02
Resistance to micro organisms: - mass loss	(%)	≤ 5,0	≤ 1,0	≤ 5,0	EN ISO 846 met. D
Resistance to streptovorticilium reticulum bacteria		Absence of stains	Absence of stains	Absence of stains	EN ISO 846 met. C Ceppo: ATCC 25607
Resistance to chlorine - colour changing according to greys scale		≥ degree 3	≥ degree 3	≥ degree 3	EN 15836 - 2 Ann. C
Resistance to staining agents - colour changing according to greys scale		≥ degree 2	≥ degree 4	≥ degree 2	EN 15836 - 2 Ann. D
Resistance to staining agents after abrasion: - colour changing according to greys scale		-	≥ degree 4	≥ degree 4	EN 15836-par. 6.3.1 EN 15836 - 2 Ann. D





SOPREMA at your service

SOPREMA SRL

Do you have a question about a
specific project, the products or
application possibilities?
All information can be found on:
www.soprema.com

via Industriale dell'Isola 3
24040 Chignolo D'Isola (BG) - Italy
Tel. +39.035-0951011
Fax +39.035-4940649
e-mail: pool@flagpool.it

ARMONIA3D
by **SOPREMA**

