



WATERPROOFING

HIGH-PERFORMANCE FLAMELESS SOLUTIONS ROOFS

FOR PROJECTS WHERE THE USE OF A FLAME IS NOT PERMITTED NOR DESIRED



Cambridge Memorial Hospital – Ontario





McGill College – Montréal

HIGH-PERFORMANCE FLAMELESS SOLUTIONS

SOPREMA has designed a range of low-temperature products, including high-performance waterproofing membranes that can be installed during all seasons and without the use of propane-powered tools. These solutions address safety concerns for projects where the use of a flame is not permitted nor desired, as it is the case for hospitals and schools.

Indeed, SBS-modified roofing systems are the popular choice for low-slope commercial, industrial and institutional buildings when a robust system is desired. They offer superior weather resistance, high durability and reliability, and better resurfacing options than other waterproofing technologies. Flameless solutions are simple, cost-saving and meet a variety of requirements for low slope roofs.

BENEFITS

- Elimination of propane tools
- Solutions adapted for projects where using a flame is not permitted
- Many possible SOPREMA solutions that meet your needs, even in low temperatures
- Patented DUO SELVEDGE technology
- Cap sheet membrane with a composite reinforcement compliant with ASTM D6162
 - Incomparable dimensional stability
 - Excellent resistance to elongation and puncture
- Applicable MAMMOUTH Warranties
- CSA A123.21 tested systems

When the temperature-adapted installation methods are followed, these SOPREMA solutions allow the installation of self-protected granular cap sheet membrane systems as well as protected membrane roof (PMR) systems in cold weather up to 14 °F (-10 °C).

SELF-PROTECTED MEMBRANE ROOFING SYSTEMS (GRANULAR)				
APPLICATIONS AT ≥ 10 °C (50 °F)				
BASE SHEET MEMBRANE	PRODUCT	ADHESIVE	MECHANICALLY FASTENED	SELF-ADHESIVE
	COLVENT BASE 840			X
	2-1 SOPRASMART BOARD SANDED	X ¹	X	
	2-1 SOPRASMART ISO HD SANDED	X ¹	X	
CAP SHEET MEMBRANE	SOPRAPLY STICK DUO			X
	SOPRAPLY STICK TRAFFIC CAP			X
	SOPRASTAR STICK GR			X
APPLICATIONS AT ≥ 0 °C (32 °F)				
BASE SHEET MEMBRANE	COLPLY BASE 410	X ²		
	2-1 SOPRASMART BOARD SANDED	X ¹	X	
	2-1 SOPRASMART ISO HD SANDED	X ¹	X	
	SOPRAPLY STICK DUO			X
CAP SHEET MEMBRANE	COLPLY TRAFFIC CAP	X ²		
	SOPRAPLY STICK TRAFFIC CAP			X
APPLICATIONS AT ≥ -10 °C (14 °F)				
BASE SHEET MEMBRANE	COLPLY BASE 410 FLEX	X ³		
	2-1 SOPRASMART BOARD SANDED	X ¹	X	
	2-1 SOPRASMART ISO HD SANDED	X ¹	X	
CAP SHEET MEMBRANE	COLPLY TRAFFIC CAP FLEX	X ³		

PROTECTED MEMBRANE ROOFING SYSTEMS (BALLASTED)				
APPLICATIONS AT ≥ 10 °C (50 °F)				
BASE SHEET MEMBRANE	PRODUCT	ADHESIVE	MECHANICALLY FASTENED	SELF-ADHESIVE
	COLVENT BASE 840			X
	2-1 SOPRASMART BOARD SANDED	X ¹	X	
	2-1 SOPRASMART ISO HD SANDED	X ¹	X	
CAP SHEET MEMBRANE	SOPRAPLY STICK DUO			X
	SOPRAPLY STICK DUO			X
APPLICATIONS AT ≥ 0 °C (32 °F)				
BASE SHEET MEMBRANE	COLPLY BASE 410	X ²		
	2-1 SOPRASMART BOARD SANDED	X ¹	X	
	2-1 SOPRASMART ISO HD SANDED	X ¹	X	
	SOPRAPLY STICK DUO			X
CAP SHEET MEMBRANE	COLPLY BASE 410	X ²		
	SOPRAPLY STICK DUO			X
APPLICATIONS AT ≥ -10 °C (14 °F)				
BASE SHEET MEMBRANE	COLPLY BASE 410 FLEX	X ³		
	2-1 SOPRASMART BOARD SANDED	X ¹	X	
	2-1 SOPRASMART ISO HD SANDED	X ¹	X	
CAP SHEET MEMBRANE	COLPLY BASE 410 FLEX	X ³		

1. DUOTACK adhesive

2. SOPRATAK or COLPLY EF adhesive

3. SOPRATAK WINTER adhesive

QUALITY

SOPREMA is committed to the development of innovative products, technologies and installation methods, such as flameless solutions for low-slope SBS-modified bitumen roofs.

DUO SELVEDGE TECHNOLOGY



- Patented technology (2004)
- On the width of the DUO SELVEDGE, a section is sealed with adhesive creating a watertight seal, which protects components under the base sheet membrane from flame.
- The remaining part is then safely heat-welded or sealed with a hot air gun or the SOPRAMATIC automatic hot-air welder.
- Each panel has an overlap of 1 inch (25 mm) at one of its ends to prevent flame penetration between panels during the application of SOPRALAP cover strips.

SOPRAMATIC

The SOPRAMATIC automatic hot-air welder is the perfect tool to adhere DUO SELVEDGE onto SOPREMA membranes.

BENEFITS

- Uniform and consistent fusion
- Nozzle adapted to the dimensions of DUO SELVEDGE
- Fast installation
- Ideal for large surfaces





A COMPLETE RANGE OF FLAMELESS PRODUCTS

FOR ALL TYPES OF BUILDINGS

FACTORY-LAMINATED PANELS

SOPRASMART®

EXCLUSIVE MANUFACTURING TECHNOLOGY

The SOPRASMART family of laminated boards includes products which characteristics, thanks to SOPREMA's exclusive technology, are synonymous with installation speed, quality, durability and efficiency.

BENEFITS

- Laminated in the controlled environment of the factory
- Total adhesion (100%) of the membrane to the support panel
- Support panels tested according to CSA A123.21 Standard
- No addition of adhesive in the lamination process
- Elimination of delamination and wrinkling risks

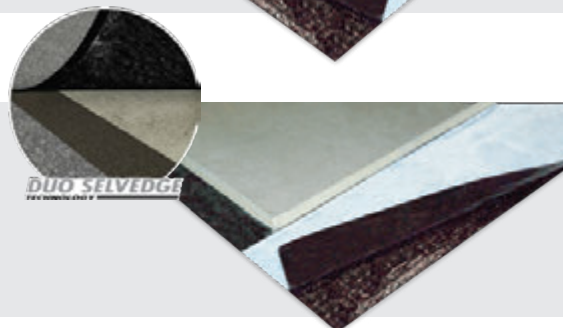
2-1 SOPRASMART BOARD SANDED

High-performance base sheet panel composed of an SBS-modified bitumen membrane with a non-woven polyester reinforcement, factory-laminated on an **asphaltic board (SOPRABOARD)**. The surface is sanded.

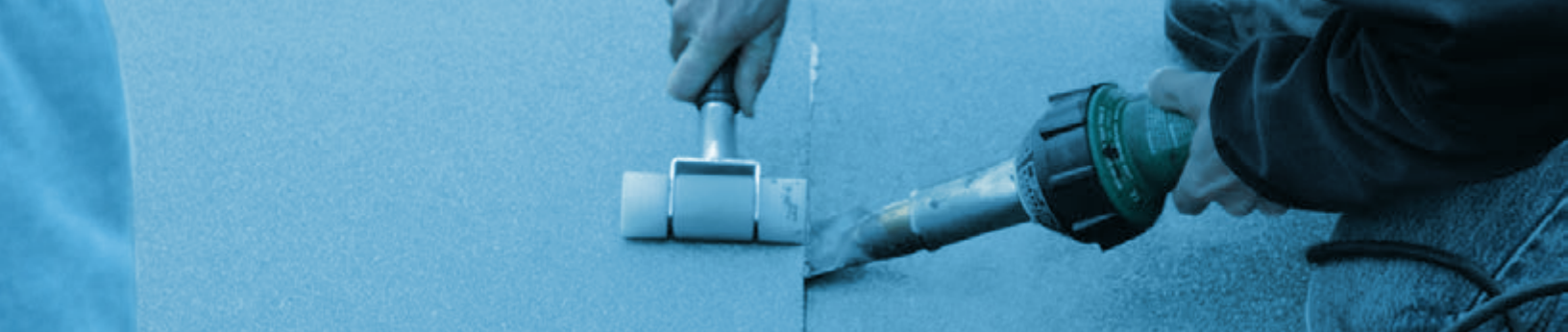


2-1 SOPRASMART ISO HD SANDED

High-performance base sheet panel composed of an SBS-modified bitumen membrane with a non-woven polyester reinforcement, factory-laminated on an **HD polyisocyanurate insulation support panel (SOPRA-ISO PLUS HD)**. The surface is sanded.



THE PANELS CAN BE INSTALLED ALL YEAR LONG WITHOUT ANY TEMPERATURE LIMITATIONS.



HIGH-PERFORMANCE MEMBRANES

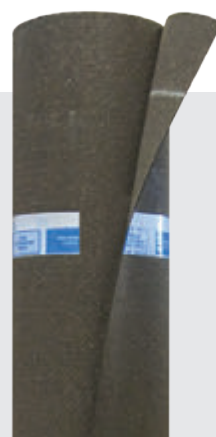


BASE SHEET MEMBRANES

COLPLY BASE 410

Base sheet membrane with composite reinforcement for adhesive application.

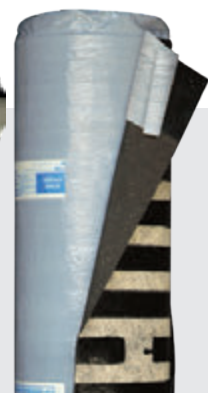
- Allows roofing work on more sensitive and complex projects
- Can be applied with environmentally friendly and odour-free COLPLY EF or SOPRATACK adhesives at temperatures as low as the freezing point
- Sanded on both sides
- Low-temperature version also available (COLPLY BASE 410 FLEX). See page 9.



COLVENT BASE 840

Semi-adhered base sheet membrane with solid fibreglass mat reinforcement.

- Discontinuous strips of bitumen
- Specially designed for SOPRA-ISO PLUS
- Excellent dimensional stability
- Allows the proper venting of the system
- Redistributed base panel movement
- Decades of proven performance



SOPRAPLY STICK DUO

Self-adhesive base sheet membrane with composite reinforcement.

- Used in vertical and horizontal applications
- Fast installation
- Slip-resistant surface that allows workers to move freely and safely on the roof



CAP SHEET MEMBRANES

SOPRAPLY STICK TRAFFIC CAP

Self-adhesive cap sheet membrane with composite reinforcement.

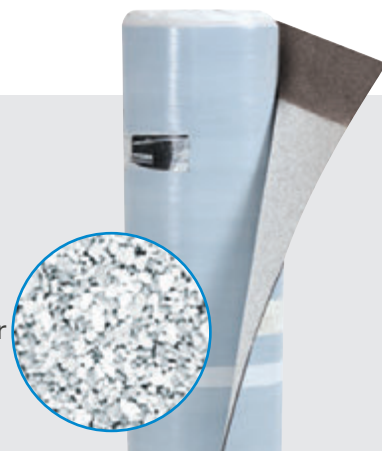
- Matchless dimensional stability
- Applicable MAMMOUTH PLATINUM Warranties
- Decades of reliability, good performance and trust



SOPRASTAR STICK GR

Self-adhesive cap sheet membrane with strong composite reinforcement.

- Surface covered with highly reflective white granules
- Contributes to LEED v4 SS (Sustainable Site) Credit – Heat Island Effect Reduction
- Extended life expectancy of the membrane due to the roofing system's lower surface temperature (59 °F to 68 °F [15 °C to 20 °C] less than other colours)



COLPLY TRAFFIC CAP

Cap sheet membrane with composite reinforcement for adhesive application.

- Easy resurfacing to extend the life of the waterproofing system
- Excellent puncture and tear resistance
- Excellent dimensional stability
- Low-temperature version also available (COLPLY TRAFFIC CAP FLEX). See page 9.





MEMBRANE ADHESIVES

COLPLY EF

Low-VOC, polyether-based adhesive used to adhere SBS-modified bitumen membranes on low slope surfaces.

- Solids content: 100%
- Fully cured in seven days
- Odour-free
- Very low VOC content
- Version for flashings and surfaces with a slope greater than 3% also available



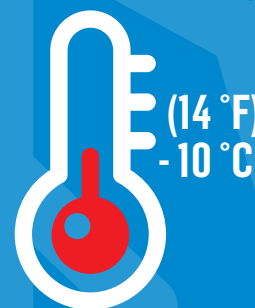
SOPRATAACK

Two-component, polyurethane-based adhesive with very low VOC content used to adhere SBS-modified bitumen membranes.

- Fully cured in 24 hours
- Perfect product for projects that restrict solvent use and odours
- Excellent adhesion
- Very low VOC content
- Version for flashings and surfaces with a slope greater than 3% also available (SOPRATAACK FLASHING)
- Low-temperature version also available (SOPRATAACK WINTER). See page 9.



HIGH-PERFORMANCE MEMBRANES AND ADHESIVE FOR WINTER CONDITIONS



When the temperature-adapted installation methods are followed, these SOPREMA solutions allow the installation of self-protected granular cap sheet membrane systems as well as protected membrane roof (PMR) systems in cold weather up to 14 °F (-10 °C).

BASE SHEET MEMBRANE

COLPLY BASE 410 FLEX

Base sheet membrane with composite reinforcement for adhesive application.

- Maintains its flexibility in low temperatures
- Sanded on both sides
- Allows roofing work on complex projects during the winter

CAP SHEET MEMBRANE

COLPLY TRAFFIC CAP FLEX

Cap sheet membrane with composite reinforcement for adhesive application.

- Maintains its flexibility in low temperatures
- Easy resurfacing to extend the life of the waterproofing system
- Excellent puncture and tear resistance
- Excellent dimensional stability

ADHESIVE

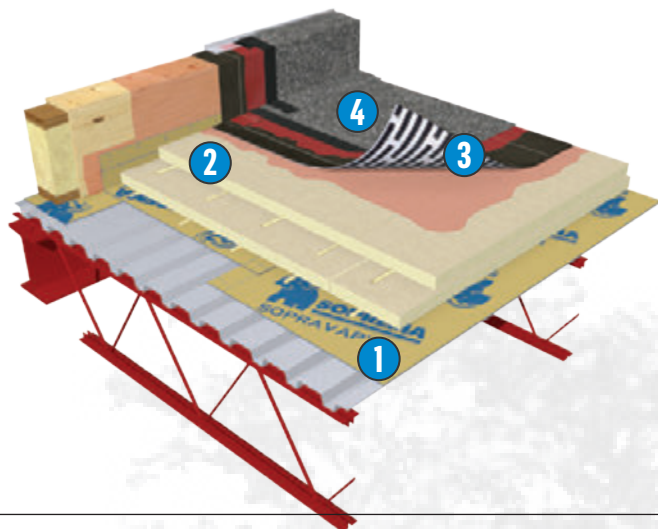
SOPRATAACK WINTER

Two-component adhesive used for low temperature applications to bond SBS-modified bitumen membranes.

- Fully cured in 24 hours
- Excellent adhesion
- Perfect for winter conditions (down to 14 °F [-10 °C])
- Version for flashings and surfaces with a slope greater than 3% also available (SOPRATAACK FLASHING WINTER)



VARIOUS SOLUTIONS FOR A FLAMELESS APPLICATION



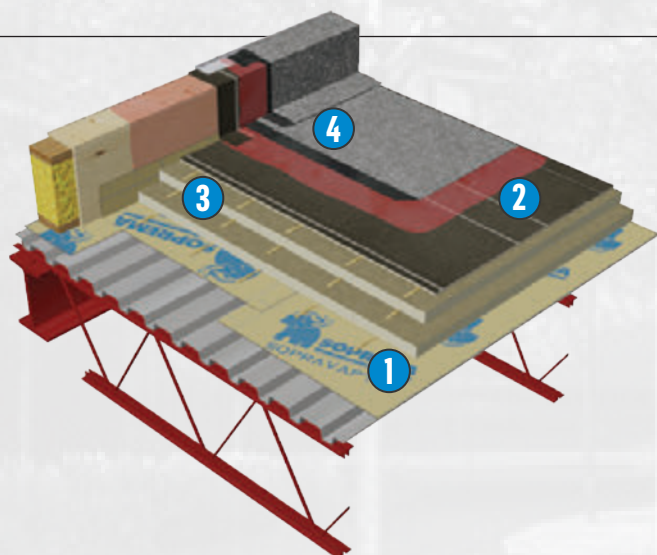
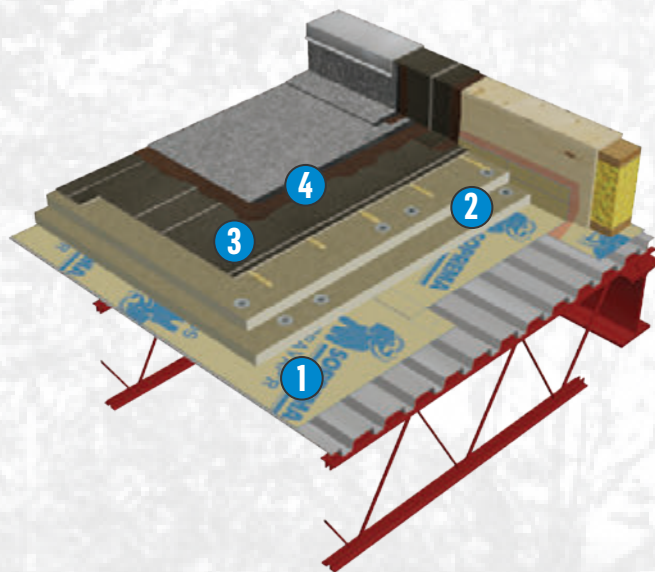
SELF-ADHESIVE TWO-PLY SYSTEM

- 1 Self-adhesive vapour barrier
- SOPRAVAP'R
- 2 Insulation panels bonded with DUOTACK or mechanically fastened
- SOPRA-ISO PLUS
- 3 Self-adhesive base sheet
- COLVENT BASE 840
- 4 Self-adhesive cap sheet membrane
- SOPRAPLY STICK TRAFFIC CAP
- SOPRASTAR STICK GR



ADHESIVE SYSTEM WITH 2-1 PANEL

- 1 Self-adhesive vapour barrier
- SOPRAVAP'R
- 2 Insulation panels bonded with DUOTACK or mechanically fastened
- SOPRA-ISO
- 3 Base sheet membranes bonded with DUOTACK or mechanically fastened
- 2-1 SOPRASMART ISO HD SANDED
- 2-1 SOPRASMART BOARD SANDED
- 4 Cap sheet membrane bonded with SOPRATAK
- COLPLY TRAFFIC CAP



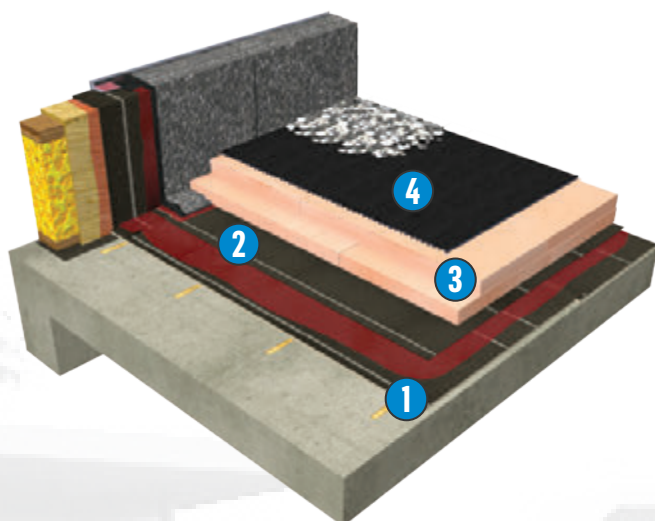
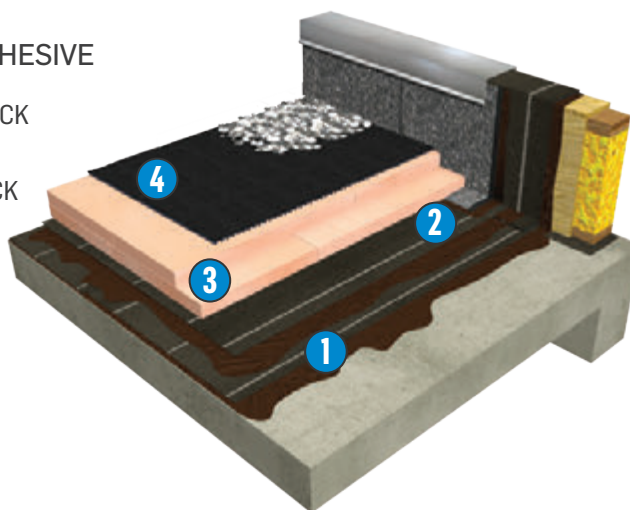
SELF-ADHESIVE SYSTEM WITH 2-1 PANEL

- 1 Self-adhesive vapour barrier
- SOPRAVAP'R
- 2 Insulation panels bonded with DUOTACK or mechanically fastened
- SOPRA-ISO
- 3 Base sheet membranes bonded with DUOTACK or mechanically fastened
- 2-1 SOPRASMART ISO HD SANDED
- 2-1 SOPRASMART BOARD SANDED
- 4 Self-adhesive cap sheet membrane
- SOPRAPLY STICK TRAFFIC CAP
- SOPRASTAR STICK GR



INVERTED TWO-PLY SYSTEM WITH ADHESIVE

- 1 Base sheet membrane bonded with SOPRATAACK
- COLPLY BASE 410
- 2 Cap sheet membrane bonded with SOPRATAACK
- COLPLY BASE 410
- 3 Loose laid insulation panels
- SOPRA-XPS
- 4 Drainage boards or filter cloth
- SOPRADRAIN ECO-VENT
- SOPRAFILTRE



INVERTED SYSTEM WITH SELF-ADHESIVE FINISH AND 2-1 PANEL

- 1 Base sheet membrane bonded with DUOTACK
- 2-1 SOPRASMART ISO HD SANDED
- 2-1 SOPRASMART BOARD SANDED
- 2 Self-adhesive cap sheet membrane
- SOPRAPLY STICK DUO
- 3 Loose laid insulation panels
- SOPRA-XPS
- 4 Drainage boards or filter cloth
- SOPRADRAIN ECO-VENT
- SOPRAFILTRE



This system can be installed at temperatures down to 14 °F (-10 °C) by replacing some components with low-temperature products (see page 9).

INNOVATION SINCE 1908

SOPREMA has developed around the idea that the quality, durability and reliability of materials must match builders' ambitions and expectations. For more than 100 years, SOPREMA has been using its expertise to develop a variety of high-end products that meet or exceed all the requirements of the construction field.

ROOFS WALLS FOUNDATIONS PARKING DECKS BRIDGES ADDITIONAL EXPERTISE



WATERPROOFING



INSULATION



VEGETATIVE
SOLUTIONS



SOUNDPROOFING



ACCESSORY
PRODUCTS

SOPREMA is an international manufacturer specializing in the production of innovative products for waterproofing, insulation, soundproofing and vegetated solutions for the building envelope and civil engineering sectors.

SOPREMA.CA

1.877.MAMMOUTH
