



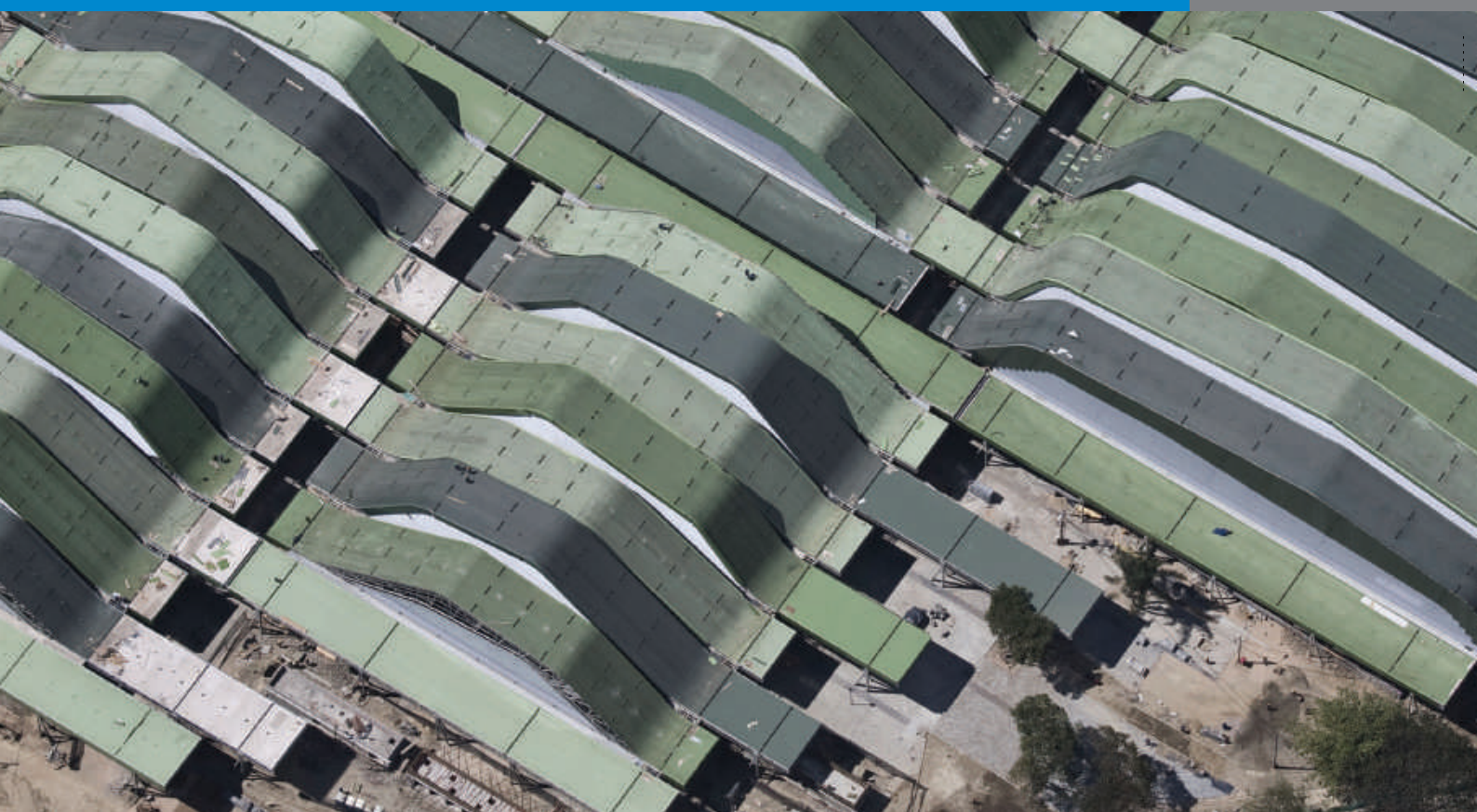
WATERPROOFING

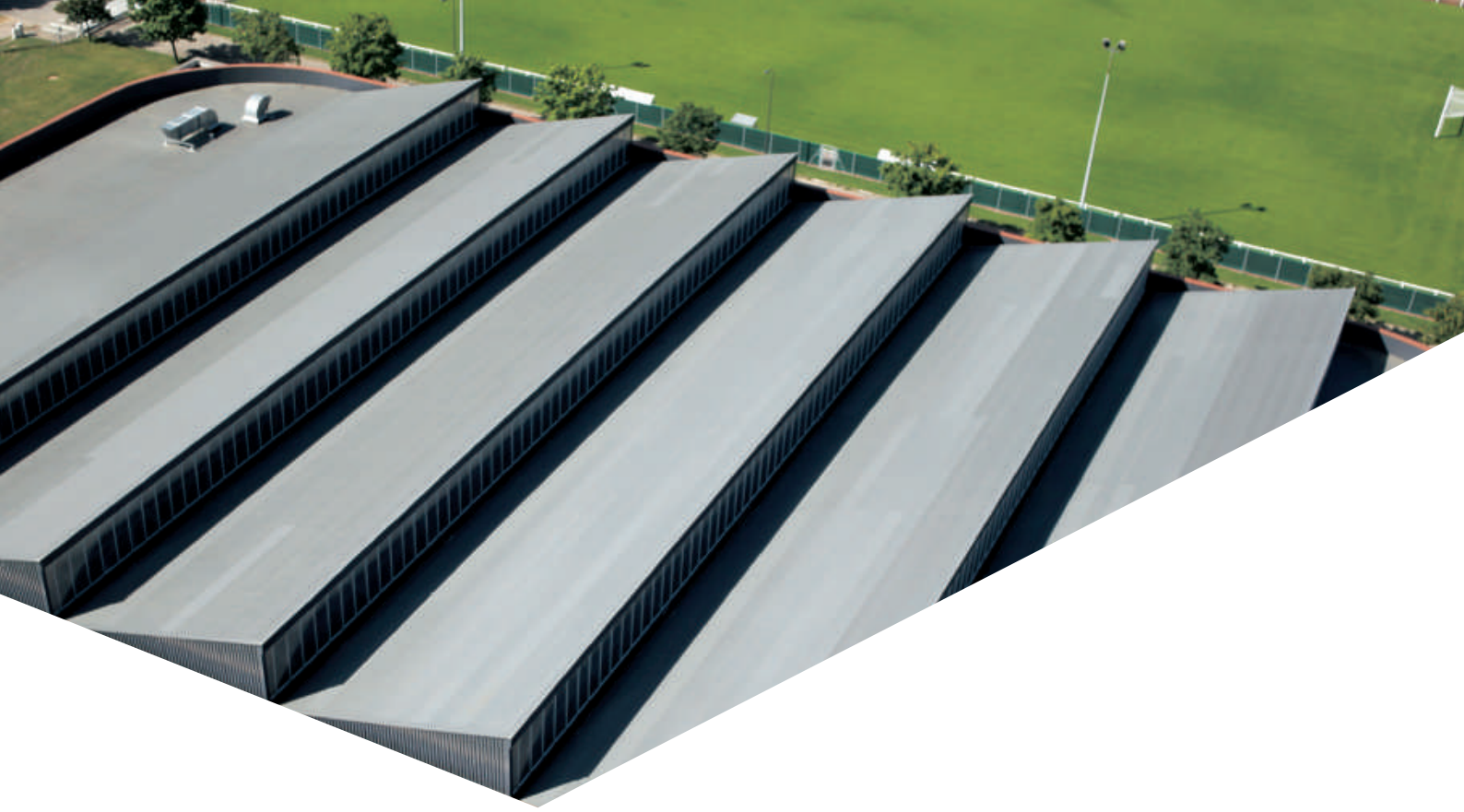
# FLAGON PVC

## SYNTHETIC WATERPROOFING

ROOFS

PVC SINGLE-PLY WATERPROOFING MEMBRANES





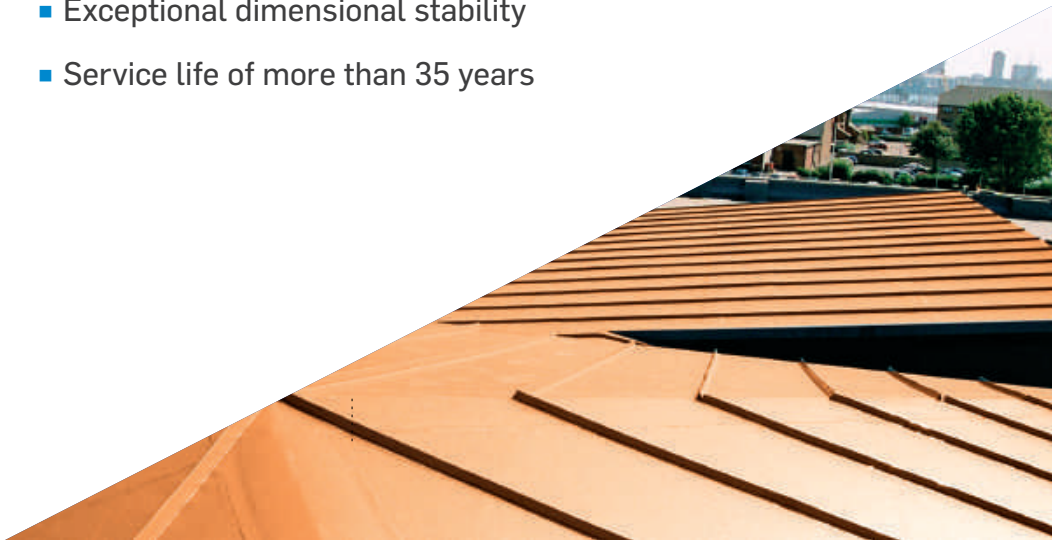
# FLAGON PVC

SOPREMA offers a wide variety of PVC single-ply waterproofing membranes for roofing, civil engineering, and swimming pools.

FLAGON PVC waterproofing membranes represent a new generation of synthetic waterproofing solutions based on innovative formulations. FLAGON development is built on more than 50 years of extensive synthetic membrane manufacturing experience and industry leading technologies.

## BENEFITS

- Flexible at low temperatures
- High mechanical resistance
- Resistant to UV rays and weathering
- Exceptional dimensional stability
- Service life of more than 35 years





## HIGH PERFORMANCE VERSATILITY

Modern architecture requires high performance materials and solutions, providing durable results in terms of functionality, profitability, and attractiveness. To meet these requirements, SOPREMA has developed a unique range of PVC waterproofing membranes. These modern and reliable systems provide users with many benefits.

FLAGON PVC waterproofing systems are suitable for both new build and refurbishment projects. The product line offers systems for fully adhered, loose laid and mechanically fixed applications.

## APPLICATION

FLAGON PVC membranes are heat welded and can be loose laid, fully adhered or mechanically fastened to the substrate. FLAGON PVC systems are the perfect solution for quick and easy installation on exposed roof systems, ballasted roof applications, and green roof installation.

### EXPOSED

Fully reinforced, UV resistant synthetic membrane systems for waterproofing exposed flat and mono-pitched roofs.



### BALLASTED

Fully reinforced, durable synthetic membranes for waterproofing ballasted roofs.

### ROOF GARDEN

Fully reinforced, root resistant synthetic membranes for waterproofing under green roof systems.



Products per application	Waterproofing under protection	Waterproofing under plots and pavers	Waterproofing under extensive green roof systems	Mechanically fixed waterproofing	Fully adhered waterproofing	Waterproofing for details
<b>Flagon SR</b> PVC membrane with polyester mesh reinforcement			●	●		
<b>Flagon SFc</b> PVC membrane with glass fiber reinforcement and non-woven polyester fleece-back	●	●	●		●	
<b>Flagon SV</b> PVC membrane with glass fiber reinforcement	●	●	●			
<b>Flagon S</b> Non-reinforced PVC membrane						●

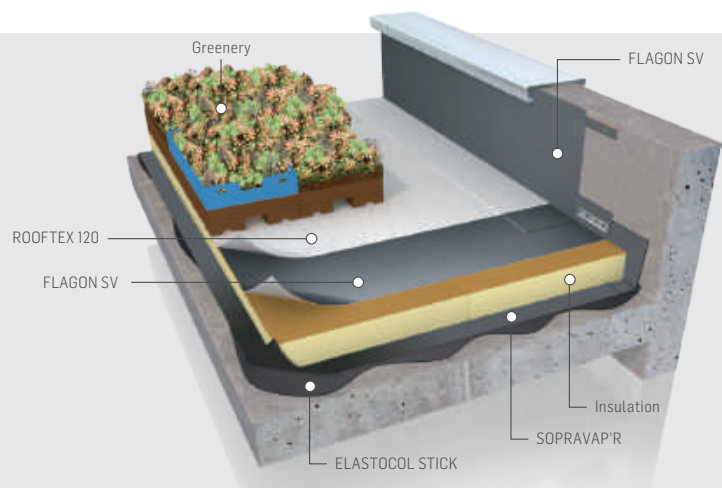


## BESPOKE ROOFING SYSTEMS

### LOOSE LAID

Substrate concrete | 0 to 5% slope  
Non-trafficable under green roofing

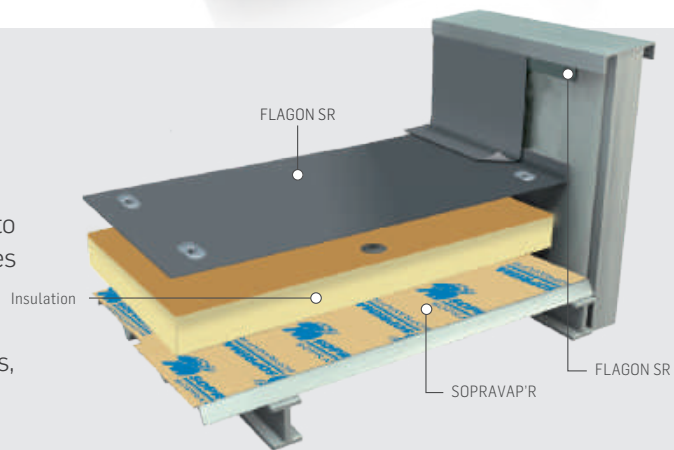
On the main surface, FLAGON SV membranes are completely loosely laid and must always be extended on the parapet where the membranes are fastened on metal bars. At the top of the upstands, FLAGON SV membranes are heat welded on metal strips mechanically fastened onto the substrate.



### MECHANICALLY FASTENED

Substrate steel deck |  $\geq 3\%$  slope  
Non-trafficable

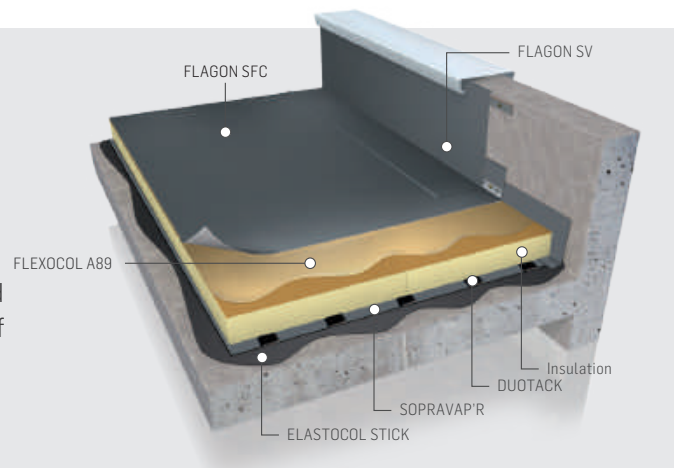
On the main surface, FLAGON SR membranes are loosely laid by mechanical fastening and always laid to run a few centimetres on the parapet. The membranes are fastened around the perimeter of the roof and around any protruding elements with metal bars or adapted screws and plates. At the top of the upstands, FLAGON SR membranes are heat welded on metal strips mechanically fastened onto the substrate.



### FULLY ADHERED

Substrate concrete | 0 to 20% slope  
Non-trafficable

On the main surface, FLAGON SFC membranes are bonded with glue and must always run a few centimetres on the parapet. The membranes are fastened around the perimeter of the roof and around any protruding element with metal bars. At the top of the upstands, FLAGON SV membranes are heat welded on metal strips mechanically fastened onto the substrate.



A full range of FLAGON PVC accessories, including outlets, leaf guards, internal and external corners, are available.

## CERTIFICATION

FLAGON PVC waterproofing is SGBC and BBA certified. FLAGON PVC is manufactured according to the principles of sustainable construction – respecting the environment, human resources, and the economy! During the manufacturing process, rainwater is collected and used to cool machinery, then recirculated through a closed circuit, avoiding any risk of environmental pollution.



## ADVANCED TECHNOLOGY

Using thermo-plastic polymer technology, FLAGON PVC membrane systems provide excellent waterproofing capacities. These systems propose lightweight waterproofing solutions, resulting in a lower permanent load on the structure onto which the systems are applied.

## UNRESTRICTED DESIGN

The FLAGON PVC range offers completely unrestricted design due to its ability to adapt to even the most complex structures and design profiles. The PVC membranes in the FLAGON range can be ordered in any RAL colour to suit specific aesthetic design requirements. Standing seam profiles can also be incorporated into the system in order to provide the aesthetic finish of a traditional standing seam metal roof. The versatility and performance benefits that the FLAGON PVC systems offer have resulted in these products becoming increasingly popular for many high profile projects.

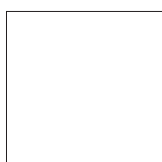
## STANDARD COLOURS AND FINISHES



Standard colour  
LIGHT GREY



LEAD GREY



WHITE



SILVER ART

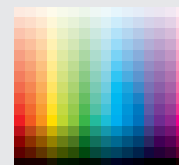


COPPER ART

\*Colours available vary by region

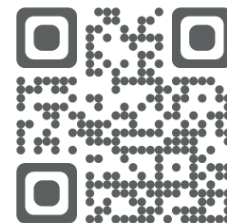
## RAL COLOURS

The finishing components in our range can be ordered in any RAL colour to suit specific aesthetic design requirements.



## DECOR PROFILES

Standing seam profiles are available for Flagon PVC systems. They provide an alternative to traditional folded or standed seam metal covering. Decor profiles are hot air welded to the installed system.



## INNOVATION SINCE 1908

SOPREMA has developed around the idea that the quality, durability and reliability of materials must match builders' ambitions and expectations. For more than 100 years, SOPREMA has been using its expertise to develop a variety of high-end products that meet or exceed all the requirements of the construction field.



SOPREMA is an international manufacturer specializing in the production of waterproofing and insulation products, as well as vegetative and soundproofing solutions, for the building and civil engineering sectors.

### SOPREMA ASIA PACIFIC

#### SINGAPORE

+65 6962 0755

60 Paya Lebar Road  
Unit 12-11 (Lobby 1)  
Paya Lebar Square  
Singapore 409051

[info@soprema.com.sg](mailto:info@soprema.com.sg)

#### CHINA

+86 21 6252 1882

Unit E, Level 9, Block 4,  
269 Tongxie Road  
Shanghai,  
China, 200335

[info@soprema.cn](mailto:info@soprema.cn)