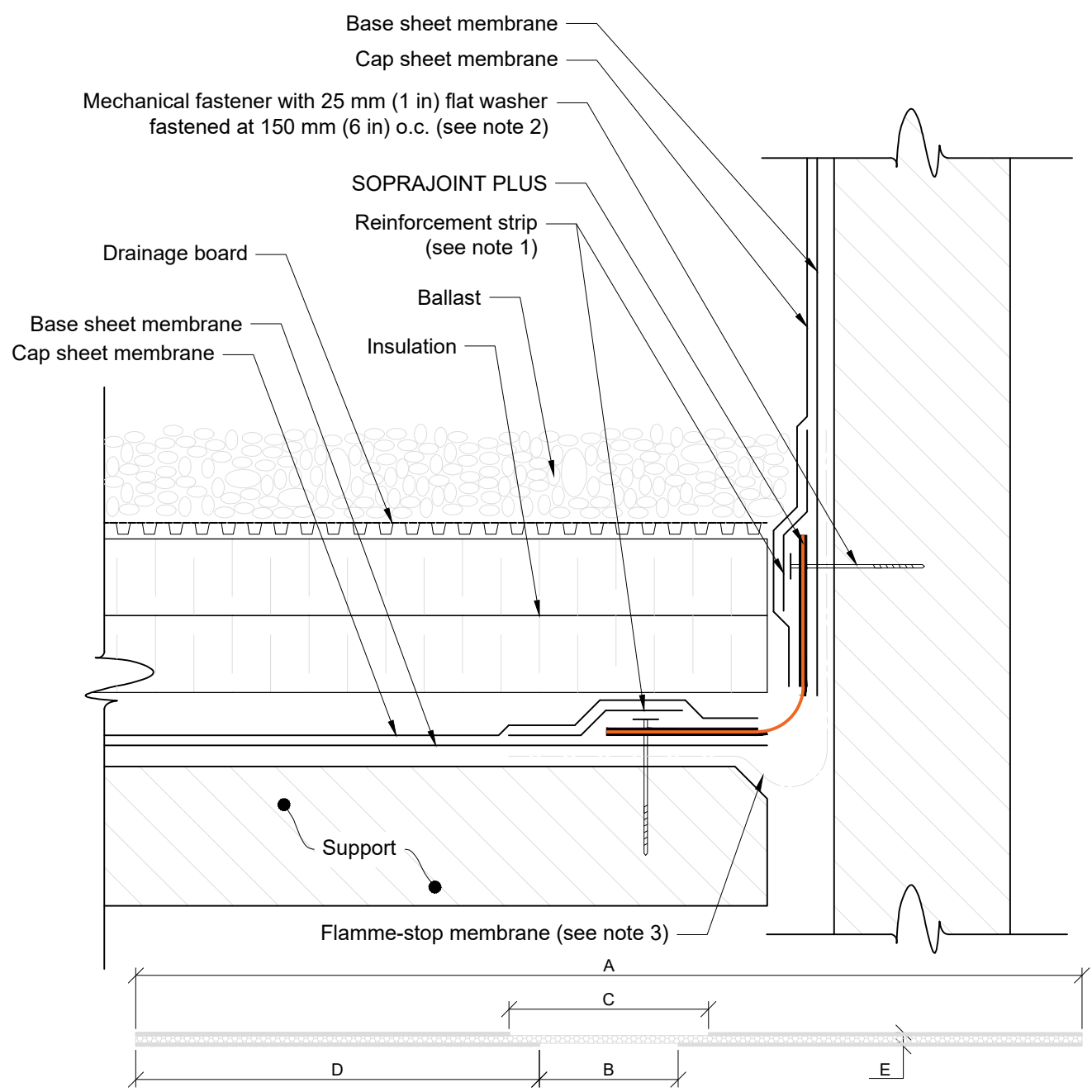




1688, J-B Michaud Drummondville, QC J2C 8E5 WWW.SOPREMA.CA



Dimensions for SOPRAJOINT PLUS expansion joints					
Name	A	B	C	D	E
Soprajoint PLUS 20	355 mm (14.0 in)	35 mm (1.4 in)	55 mm (2.2 in)	160 mm (6.3 in)	2.5 mm (3/32 in)
Soprajoint PLUS 40	390 mm (15.4 in)	70 mm (2.8 in)	90 mm (3.5 in)	160 mm (6.3 in)	2.5 mm (3/32 in)
Soprajoint PLUS 75	435 mm (17.1 in)	115 mm (4.5 in)	135 mm (5.3 in)	160 mm (6.3 in)	2.5 mm (3/32 in)
Soprajoint PLUS 100	500 mm (19.7 in)	180 mm (7.0 in)	200 mm (7.9 in)	160 mm (6.3 in)	2.5 mm (3/32 in)
Soprajoint PLUS 125	560 mm (22.0 in)	240 mm (9.4 in)	260 mm (10.2 in)	160 mm (6.3 in)	2.5 mm (3/32 in)

Note 1: Minimum 150 mm (6 in) reinforcement strip centered on the edge of the flange.
 Note 2: Only required for SOPRAJOINT PLUS 75, 100 and 125
 Note 3: The use of a flamme-stop membrane is required when the expansion joint is heat-welded.

COPYRIGHT 2020 SOPREMA

Title : PMR SOPRAJOINT PLUS - Roof-wall

Scale: N.T.S	Date: SEPT. 2020	Drawing number: SOP114-02
-----------------	---------------------	------------------------------