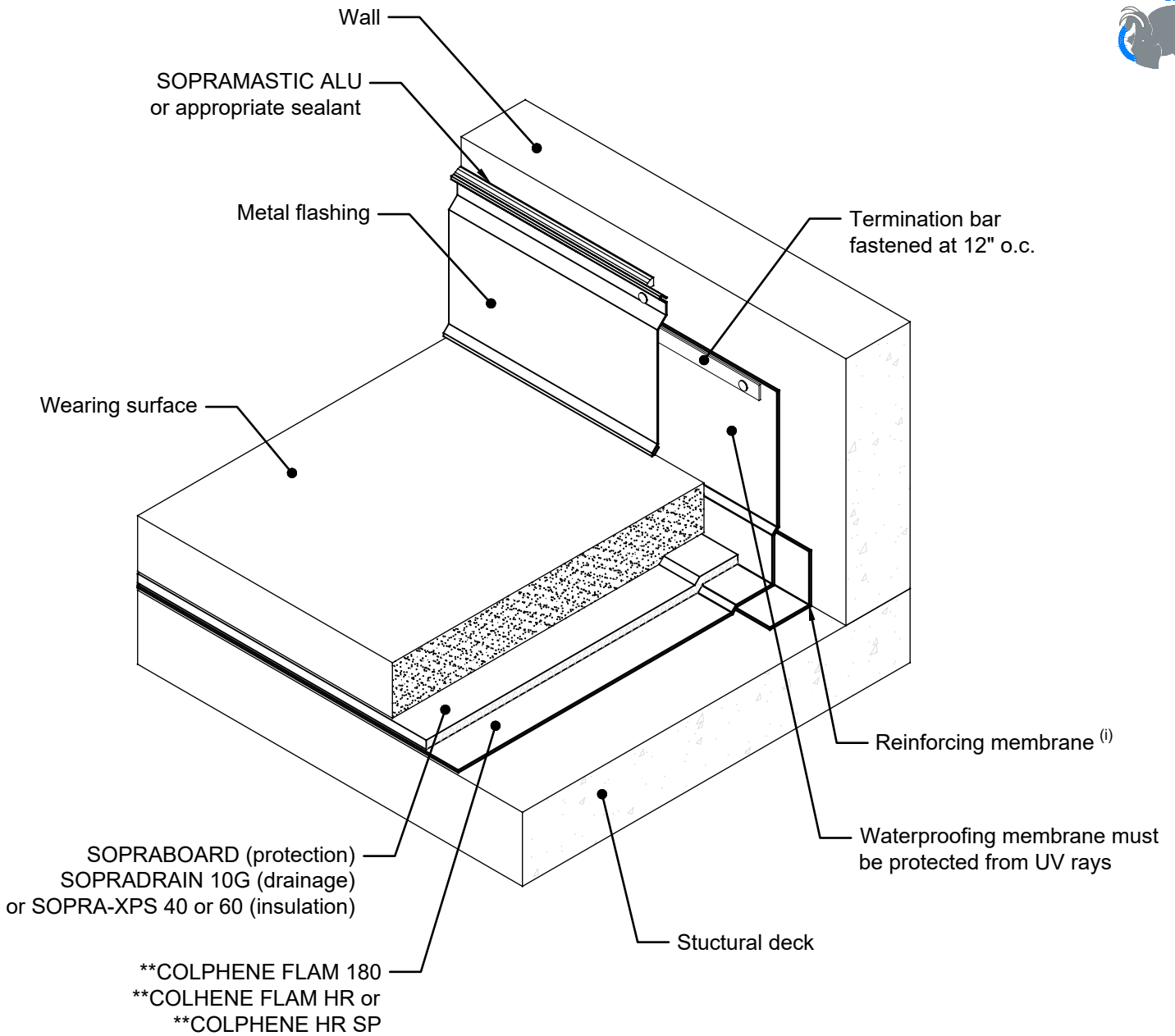


**\*\*THERMOFUSIBLE MEMBRANES**

COLPHENE FLAM 180, COLPHENE FLAM HR  
and COLPHENE HR SP:  
Seal all terminations (horizontal and vertical)  
with trowel with a round end.



Note: Termination membranes needs to exceed minimum 4" over top wearing surface  
(i): Use the waterproofing membrane installed on the system as reinforcing membrane.

COPYRIGHT 2017 SOPREMA

Title:  
PLAZA DECK - COLPHENE LM BARR - UPSTAND TIE-IN WITH METAL FLASHING

Scale:  
N.T.S.

Date:  
May 2017

Drawing number:  
SOP515-02

