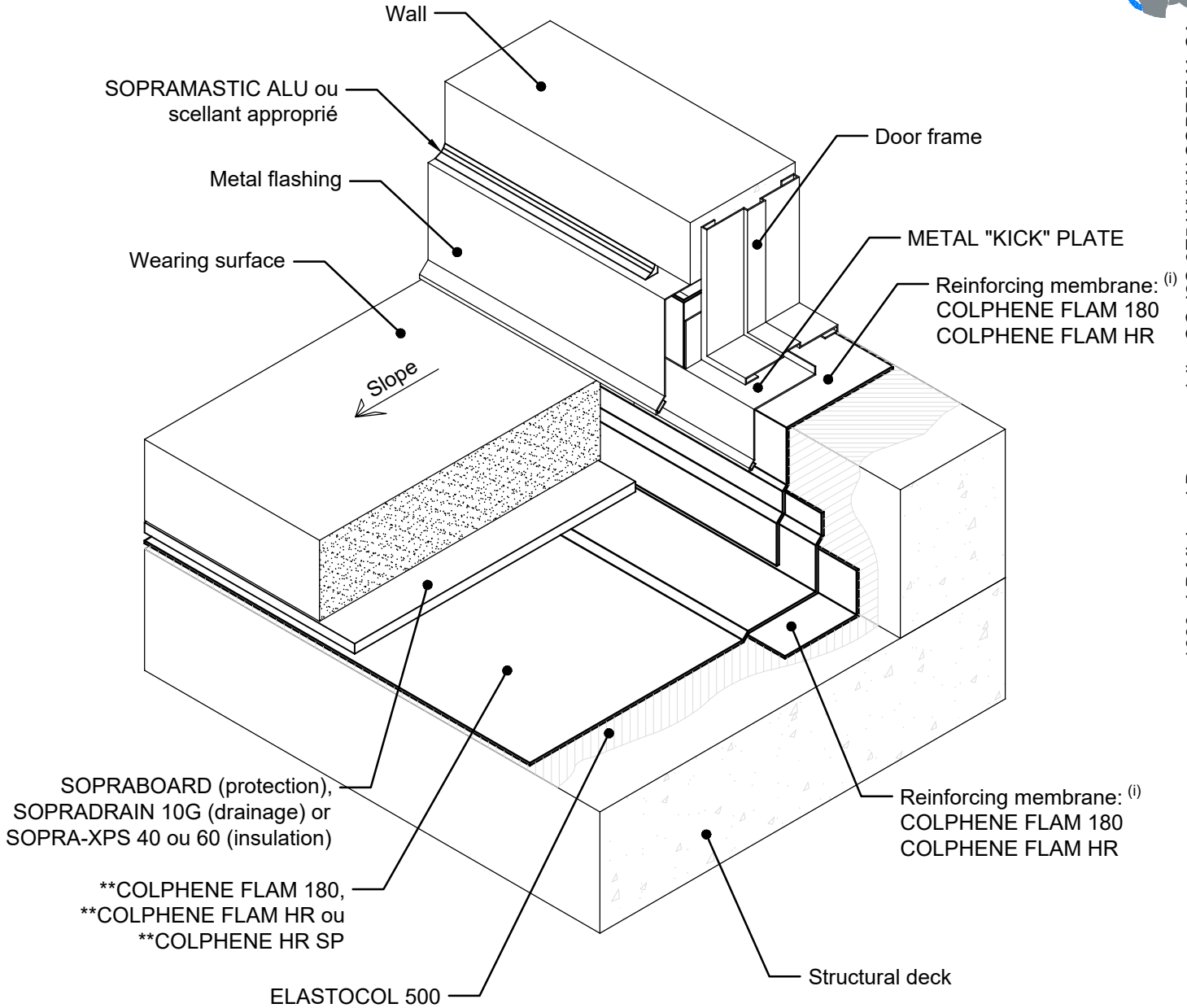


****THERMOFUSIBLE MEMBRANES**

COLPHENE FLAM 180, COLPHENE FLAM HR AND COLPHENE HR SP:
 Seal all terminations (horizontal and vertical)
 with trowel with a round end.



1688, J-B Michaud Drummondville, QC J2C 8E5 WWW.SOPREMA.CA



NOTE:

(i): Use the waterproofing membrane installed on the system as reinforcing membrane.

COPYRIGHT 2017 SOPREMA

Title:
 PLAZA DECK - DOOR FRAME

Scale:
 N.T.S.

Date:
 May 2017

Drawing number:
 SOP515-04