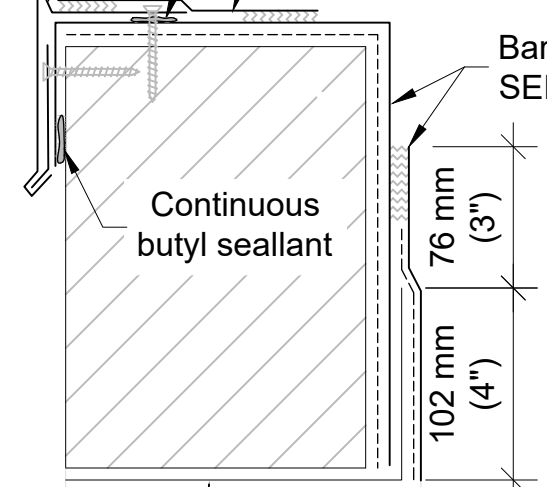


PLAN VIEW

SENTINEL VCM  
(Vinyl Coated metal)  
Continuous butyl seallant  
Bare-back reinforcing  
membrane

Bare-back PVC flashing membrane adhered with  
SENTINEL S BONDING ADHESIVE



Continuous  
butyl seallant

76 mm  
(3")  
102 mm  
(4")

76 mm (3")

25 mm (1")

Bare-back reinforcing membrane

Prefabricated  
scupper with vinyl  
coated metal  
Fasteners and plates  
at 305 mm (12") o.c.

1. Support
2. Vapour barrier
3. 2 layers of insulation panels
4. Compatible support panel
5. Adhesive <sup>(1)</sup>
6. PVC field membrane  
(bare or fleece back)

NOTES:  
(1) : Use SENTINEL S BONDING ADHESIVE with bare-back membranes and DUOTACK SPF with fleece-back membranes.  
See detail 143-01 for an alternative perimeter fastening solution.  
~~~~~ = Minimal 38 mm (1.5 in) continuous heat welded seam.

COPYRIGHT 2021 SOPREMA

Title:  
PVC PARAPET - SCUPPER

Scale:  
VARIES

Date:  
MARCH 2021

Drawing number:  
SOP141-04