

COLPHENE[®] BSW

www.soprema.ae

PRE-APPLIED MEMBRANE SYSTEM DESIGNED FOR BLIND SIDE WATERPROOFING APPLICATIONS



WATERPROOFING
SYSTEMS

FOUNDATION



DUO SELVEDGE TECHNOLOGY

HIGH PEEL STRENGTH TO CONCRETE

**SUPERIOR RESISTANCE TO LATERAL
WATER MIGRATION**

**EXCELLENT RESISTANCE TO
HYDROSTATIC HEAD PRESSURE**

**EXCEPTIONAL RESISTANCE TO
AGGRESSIVE CHEMICALS & GASES**

**OUTSTANDING COEFFICIENT
OF FRICTION**

VALUE ENGINEERING SYSTEM

**DUO SELVEDGE
TECHNOLOGY**

SOPREMA[®] MWM L.L.C
Mussafah Industrial
Zone, ICAD1
Abu-Dhabi, United Arab
Emirates
Tel: +971 2550 3383
www.soprema.ae
info@soprema.ae

SOPREMA[®] MWM L.L.C
IBN Battuta Gate
Office 1004
Dubai, United Arab
Emirates
Tel: +971 4 878 6393
www.soprema.ae
info@soprema.ae



COLPHENE® BSW

PRE-APPLIED MEMBRANE SYSTEM DESIGNED FOR
BLIND SIDE WATERPROOFING APPLICATIONS



WATERPROOFING
SYSTEMS

FOUNDATION

HIGH PEEL STRENGTH TO POURED STRUCTURAL CONCRETE

UPPER SURFACE

SPECIALLY ENGINEERED SILICON DIOXIDE CRYSTALS FOR SUPERIOR ADHESION

COLPHENE® BSW

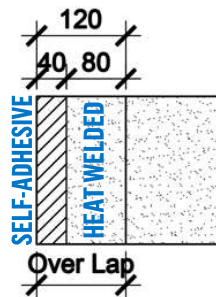
In construction projects where space is sometimes limited and areas are confined prohibiting access to the exterior walls of the foundation a high-performance pre-applied foundation waterproofing system is an ideal solution.

SOPREMA®'s COLPHENE® BSW systems are the perfect solutions for waterproofing horizontal and vertical surfaces in blind side wall applications located in high-density areas. They are crucial when nearby buildings limit the access and excavation of a new project. **COLPHENE® BSW** membranes stand out from other offerings due to their high performance and speed of installation.

One of the **COLPHENE® BSW** membranes features is their adherence to cast-in-place concrete, benefiting from the heat of the exothermic reaction that occurs during the curing process of concrete. **COLPHENE® BSW** systems have superior adhesion due to the chemical and mechanical bond between the waterproofing membranes and structural concrete, which not only prevents water infiltration inside the building but also prevents lateral water migration between the membrane and concrete.

DUO SELVEDGE TECHNOLOGY

The Safest Choice, For a safer installation, **COLPHENE® BSW** membranes are provided with DUO SELVEDGE, a unique technology developed and patented by **SOPREMA®**. This technology provides an overlap of 100 - 120 mm where a percentage of the side-lap is sealed with a self-adhesive, and the balance of the side-lap is then safely thermo-welded or sealed with hot air.

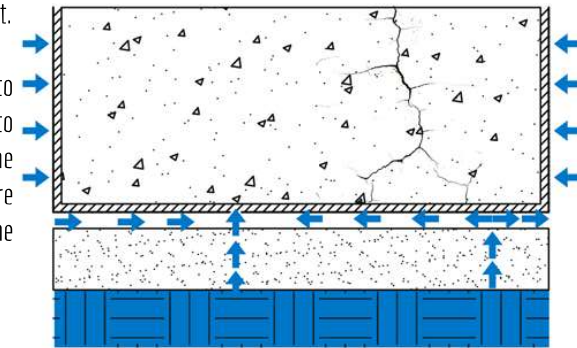


CONCEPTS

SOPREMA®'s SOLUTION : COLPHENE® BSW Concept.

Pre-applied membrane system that is fully bonded to structural concrete. As it is natural for concrete to crack, it is important to protect it from infiltration. The technology and concept of **COLPHENE® BSW** ensure the full adhesion of the waterproofing system to the foundation.

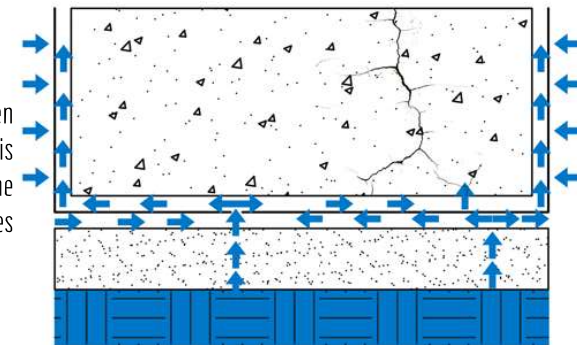
BONDED TO STRUCTURAL CONCRETE
→ WATER PATH INDICATOR



OTHER SYSTEMS IN MARKET

OTHER OFFERING ON THE MARKET:

Concept of a Conventional Waterproofing System When not bonded to the structural concrete slab. When there is water migration between the waterproofing membrane and structural concrete, the structure becomes vulnerable and corrective actions are very costly.



COLPHENE® BSW

PRE-APPLIED MEMBRANE SYSTEM DESIGNED FOR BLIND SIDE WATERPROOFING APPLICATIONS



WATERPROOFING
SYSTEMS

FOUNDATION

HIGHER PROTECTION BY DUO SELVEDGE TECHNOLOGY

HORIZONTAL APPLICATION

COLPHENE® BSW H 3.5

is a high performance, fully bonded heat membrane designed for blind side waterproofing assemblies in pre-applied horizontal below waterproofing applications. It is composed of Elastomeric Styrene-Butadiene-Styrene (SBS) modified bitumen combined with Ultra-High Strength (UHS) reinforcement system (heavy duty non-woven polyester). The top surface is treated with a Specially Engineered Silicon Dioxide Crystals while the underside is laminated with a distinct synthetic film. The unique design of **COLPHENE® BSW H 3.5** and the unique DUO SELVEDGE technology allows for homogenous bond to structural concrete, resistance to hydrostatic pressure, lateral water migration and precise alignment of side-laps to be heat-welded using propane torch or a hot air gun.



HORIZONTAL APPLICATION

COLPHENE® BSW H 4.5

is a high performance, fully bonded heat membrane designed for blind side waterproofing assemblies in pre-applied horizontal below waterproofing applications. It is composed of Elastomeric Styrene-Butadiene-Styrene (SBS) modified bitumen combined with Ultra-High Strength (UHS) reinforcement system (heavy duty non-woven polyester). The top surface is treated with a Specially Engineered Silicon Dioxide Crystals while the underside is laminated with a distinct synthetic film. The unique design of **COLPHENE® BSW H 4.5** and the unique DUO SELVEDGE technology allows for homogenous bond to structural concrete, resistance to hydrostatic pressure, lateral water migration and precise alignment of side-laps to be heat-welded using propane torch or a hot air gun.



HORIZONTAL APPLICATION

COLPHENE® BSW UNILAY HP

is a high performance, fully bonded composite sheet membrane designed for blind side waterproofing assemblies in pre-applied horizontal waterproofing applications. It is composed of a proprietary blend of Elastomeric Styrene-Butadiene-Styrene (SBS) modified bitumen combined with Ultra-High Strength (UHS), dimensionally stable double reinforcement system (heavy duty non-woven polyester combined with specific fleece). The top surface is treated with a Specially Engineered Silicon Dioxide Crystals while the underside is laminated with a distinct synthetic film. The unique design of **COLPHENE® BSW UNILAY HP** and the DUO SELVEDGE technology allows for homogenous bond to structural concrete, resistance to hydrostatic pressure, lateral water migration and precise alignment of side-laps to be heat-welded using propane torch or a hot air gun.



**DOUBLE
REINFORCEMENT**

HORIZONTAL APPLICATION

COLPHENE® BSW BASE 4.0

COLPHENE® BSW BASE 4.0 is a series of flexible reinforced SBS-modified bitumen sheet membranes for use in approved multi-ply and flashing assemblies. It is composed of a proprietary formulation of elastomeric Styrene-butadiene-styrene (SBS) polymer modified bitumen and is reinforced with a tough, dimensionally stable non-woven polyester mat. The topside and underside is surfaced with thermofusible film.



DIMENSIONS

10 X 1 Meters Roll

THICKNESS

3.5 MM

SURFACE FINISH

Specially Engineered Silicon Dioxide Crystals

UNDERFACE FINISH

Synthetic Film

SIDE-LAP WIDTH

120 MM

APPLICATION METHOD

Loose-laid with Heat-Welded Laps

DIMENSIONS

8 X 1 Meters Roll

THICKNESS

4.5 MM

SURFACE FINISH

Specially Engineered Silicon Dioxide Crystals

UNDERFACE FINISH

Synthetic Film

SIDE-LAP WIDTH

120 MM

APPLICATION METHOD

Loose-laid with Heat-Welded Laps

DIMENSIONS

8 X 1 Meters Roll

THICKNESS

4.5 MM

SURFACE FINISH

Specially Engineered Silicon Dioxide Crystals

UNDERFACE FINISH

Synthetic Film

SIDE-LAP WIDTH

120 MM

APPLICATION METHOD

Loose-laid with Heat-Welded Laps

DIMENSIONS

10 X 1 Meters Roll

THICKNESS

4.0 MM

SURFACE FINISH

Thermofusible Film

UNDERFACE FINISH

Thermofusible Film

SIDE-LAP WIDTH

100 MM

APPLICATION METHOD

Loose-laid with Heat-Welded Laps

COLPHENE® BSW

PRE-APPLIED MEMBRANE SYSTEM DESIGNED FOR BLIND SIDE WATERPROOFING APPLICATIONS



WATERPROOFING
SYSTEMS

FOUNDATION

VERTICAL APPLICATION

COLPHENE® BSW V 3.5

COLPHENE® BSW V 3.5 is a high performance, fully bonded composite sheet membrane designed for blind side waterproofing assemblies in pre-applied vertical below grade waterproofing applications. It is composed of a proprietary blend of Elastomeric Styrene-Butadiene-Styrene (SBS) modified bitumen combined with Ultra-High Strength (UHS), dimensionally stable reinforcement system (heavy duty non-woven polyester). The top surface is treated with a Specially Engineered Silicon Dioxide Crystals while the underside is laminated with a distinct synthetic film. The unique design of COLPHENE® BSW V 3.5 and the unique DUO SELVEDGE technology allows for homogenous bond to structural concrete, resistance to hydrostatic pressure, lateral water migration and precise alignment of side-laps to be heat-welded using propane torch or a hot air gun.



VERTICAL APPLICATION

COLPHENE® BSW BASE 4.0

COLPHENE® BSW BASE 4.0 is a series of flexible reinforced SBS-modified bitumen sheet membranes for use in approved multi-ply and flashing assemblies. It is composed of a proprietary formulation of elastomeric Styrene-butadiene-styrene (SBS) polymer modified bitumen and is reinforced with a tough, dimensionally stable non-woven polyester mat. The topside and underside is surfaced with thermofusible film.



DIMENSIONS

10 X 1 Meters Roll

THICKNESS

3.5 MM

SURFACE FINISH

Specially Engineered Silicon Dioxide Crystals

UNDERFACE FINISH

Synthetic Film

SIDE-LAP WIDTH

120 MM

APPLICATION METHOD

Loose-laid with Heat-Welded Laps

DIMENSIONS

10 X 1 Meters Roll

THICKNESS

4.0 MM

SURFACE FINISH

Thermofusible Film

UNDERFACE FINISH

Thermofusible Film

SIDE-LAP WIDTH

100 MM

APPLICATION METHOD

Loose-laid with Heat-Welded Laps

VARIETY OF APPLICATION DESIGNS

Regardless of the water table level, COLPHENE® BSW system comes in a well-measured variety of system layouts and designs that suit each project's requirements.

Contact SOPREMA®'s representative for more information.

THE IDEAL WATERPROOFING SOLUTION FOR FOUNDATIONS IN HIGH-DENSITY AREAS

COLPHENE® BSW is a fully reinforced pre-applied membrane system designed for horizontal and vertical external blind side waterproofing applications. With its unique design, it can be used near buildings that limit access and excavation.

The membranes is composed of a selected blend of high-performance SBS modified bitumen, an ultra-high-strength reinforcement and specially designed top surface.

Choosing SOPREMA® is a guarantee of reliability. As a testimony to the trusted performance of its products, SOPREMA offers you a complete warranty program that lives up to its reputation and expertise. You simply choose the level of protection you require to ensure your total peace of mind.



COLPHENE[®] BSW

PRE-APPLIED MEMBRANE SYSTEM DESIGNED FOR BLIND SIDE WATERPROOFING APPLICATIONS



WATERPROOFING
SYSTEMS

FOUNDATION

REPROFILING, WATERPROOFING & FULL ENCAPSULATION GUARANTEED

PILE HEAD TREATMENT

ALSAN[®] CAP C

ALSAN[®] CAP-C is a single component, shrinkage compensated, pile cap profiling and repair mortar manufactured from selected cements, aggregates, and additives. **ALSAN[®] CAP-C** is manufactured from high strength cement, special aggregates and additives all collectively are designed to provide a high strength, flowable, ready-touse formula to serve the purpose of reprofiling irregularities in concrete and void filling of structural deformations.



PILE HEAD TREATMENT

ALSAN[®] CAP E

ALSAN[®] CAP-E is a three-component, high performance fluid epoxy resin designed for general heavy-duty civil engineering applications and for encapsulating pile tops in the range from 5 to 50 mm. **ALSAN[®] CAP-E** is manufactured from a combined blend of epoxy resins with select aggregates all delivering a durable flowable & homogeneous grout when mixed together. **ALSAN[®] CAP-E** is also used in void-filling applications in the construction industry. With exceptional resistance to aggressive chemicals such as acids, alkalis and sea water, **ALSAN[®] CAP-E** is an excellent choice for various civil engineering grouting applications.



PACKAGING

Pack of 3 components (Base, Hardener & Filler)

COMPRESSIVE STRENGTH (7 DAYS)

(ASTM C579) : >87 N/mm²

TENSILE STRENGTH (7 DAYS)

(ASTM C307) : 16.1 N/mm²

FLEXURAL STRENGTH (7 DAYS)

(ASTM C580) : 38 N/mm²

LIQUID APPLICATIONS

ALSAN[®] FLASHING

is a ready-to-use single component polyurethane /bitumen waterproofing resin applied directly on to substrate without a primer.



PACKAGING

Cans of 3.78 L. and 19 L.

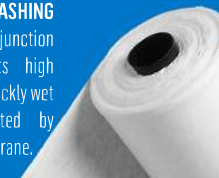
AVERAGE CONSUMPTION

0.75 L/m² per coat

REINFORCEMENT

FLASHING REINFORCEMENT

FLASHING REINFORCEMENT is 100 % polyester stitch-bonded fabric. This high performance reinforcement is made without the use chemical binder. **FLASHING REINFORCEMENT** is used in conjunction with **ALSAN[®] FLASHING**. Its high absorption capability allows to quickly wet into and become encapsulated by **ALSAN[®] FLASHING** liquid membrane.



ROLL SIZE

0.15 X 30.5 m (6 in x 100 ft)

PRIMER

SOPRADERE[®] HT

SOPRADERE[®] HT is an excellent quality universal primer, manufactured from a special type of bitumen. It is solvent-base and commonly applied onto various substrates (concrete, concrete blocks, bricks, foam concrete, fiber, and steel substrates) to improve bonding of heat-welded or self-adhering bituminous membranes. **SOPRADERE[®] HT** is manufactured in accordance with ASTM D41 standard.



PACKAGING

20 L. pails and 200 L. drums

UNIQUE DETAILED DESIGN FOR PILES

PACKAGING

25 kg (55 Lb) bag

COMPRESSIVE STRENGTH

24 Hours 18 MPa (2600 psi)

7 Days 45 MPa (6525 psi)

28 Days 65 MPa (9425 psi)

COLPHENE® BSW

PRE-APPLIED MEMBRANE SYSTEM DESIGNED FOR BLIND SIDE WATERPROOFING APPLICATIONS



WATERPROOFING
SYSTEMS

FOUNDATION

COMPLETE YOUR RANGE WITH SOPREMA® ACCESSORIES

ACCESSORIES

SOPRASTRIP®

SOPRASTRIP® is a prefabricated wall / floor, ready to install, support chamfer and angle fillet used to eliminate the stress over structural joints in construction projects. **SOPRASTRIP®** is manufactured from a distinct material compatible with multiple types of waterproofing membranes suiting different design and installation methods. As a practical substitute to sand/cement angle fillet, **SOPRASTRIP®** is fast and easy to install by mechanical fastening at junctions prior to installing waterproofing systems.



PACKAGING

3 L.m. strips

SOPRAJOINT® PLUS TPE 320

SOPRAJOINT® PLUS TPE 320 is a Thermoplastic Elastomer water-stop designed to ensure complete waterproofing at expansion joints of buildings and civil engineering structures. **SOPRAJOINT® PLUS TPE 320** is a fatigue-resistant water-stop designed to withstand the pressure and accommodate for the projected movement and elongation at the expansion joints in buildings.



THICKNESS

5.2 mm

WIDTH

320 mm

LENGTH

25 L.M.

ACCESSORIES

COLPHENE® SP LAP

COLPHENE® SP LAP is a waterproofing membrane composed of SBS modified bitumen and a non-woven polyester reinforcement. The surface is sanded, while the underface is covered with a thermofusible plastic film. **COLPHENE SP LAP** is used as reinforcing strip in waterproofing systems for foundations and below grade surfaces.



THICKNESS

3.5 mm

DIMENSIONS

30 cm X 10 m (11.8 in x 33 ft)

SOPRAJOINT® RIH

Multi-use re-injectable hose system designed and made of flexible Solid PVC Nitrile blend (Thermoplastic Rubber) wrapped around by sponge strips while the whole assembly is strengthened by Nylon Braiding.



PACKAGING

1 X 100 m Rolls

INTERNAL DIA.

6 mm.

EXTERNAL DIA.

13 mm, 19 mm.

ACCESSORIES

SOPRAJOINT® WS

SOPRAJOINT® WS is made with hot-dip galvanized steel sheets, coated on both sides with a blend of pressure sensitive coating that bonds to the poured concrete. A split back silicone release paper reliably protects both pressure sensitive sides and is removed prior to casting concrete. **SOPRAJOINT® WS** is a high quality engineered, and diverse bitumen compatible water stop for sealing and waterproofing concrete construction joints. It can be installed over external and internal horizontal and vertical construction joints.



DIMENSIONS

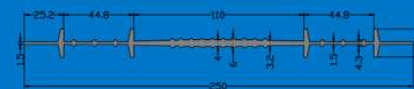
2 m X 16.7 cm

THICKNESS

1.7 mm

SOPRAJOINT® PVC ICJ 250

SOPRAJOINT® PVC ICJ 250 is a line of semi-flexible water stopping profiles made of Polyvinyl chloride and designed for use in civil engineering applications and construction industry for stopping water ingress in construction and expansion joints. **SOPRAJOINT® PVC ICJ 250** exhibit a reliable performance in below-grade applications due to its high resistance to chemicals and elements present in the soil.



ROLL SIZE

0.20 X 15 m

POST-APPLIED APPLICATIONS

COLPHENE® TORCH'N STICK

COLPHENE® TORCH'N STICK is a high performance reinforced membrane especially designed for below grade waterproofing and tanking applications. **COLPHENE TORCH'N STICK** is manufactured from high performance SBS modified enriched bitumen combined with a high strength non-woven polyester reinforcement. This combination provides thermal stability of the bitumen compound coupled with high puncture, tear and tensile strength that reflects on the long service-life of the membrane. The top and under surfaces of **COLPHENE® TORCH'N STICK** are covered by a special thermofusible plastic film that allows for instant and strong adhesion of protection boards or drainage panels with the minimum heating energy.



THICKNESS

2.7 mm

ROLL DIMENSION

12 X 1 m

SOPRABOARD SF

high quality, semi flexible bituminous board for protecting waterproofing material against long-term exposure, backfill and damage caused by construction traffic, concreting and other subsequent works. **SOPRABOARD SF** is produced with a mix of bitumen compounds, stabilizers, modifiers and strengthened with a rot-proof glass fiber fabric reinforcement, providing high puncture resistance and a low deflection coefficient to adapt to normal site usage. **SOPRABOARD SF** is supplied in sheets of 1 m X 2 m, in standard thickness of 4 mm and 6 mm.

