

ARMONIA 3D

POOL LINER

ARMONIA 3D is a PVC synthetic membrane reinforced with a polyester mesh, used as a single-layer swimming pool covering.

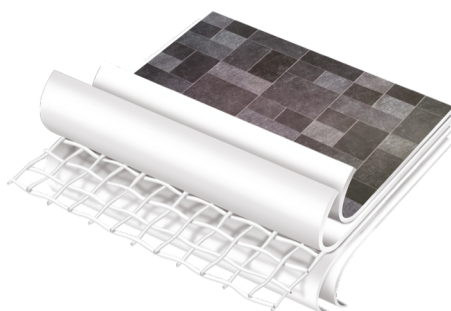
ARMONIA 3D is embossed to reproduce the patterns of natural stones and ceramic tiles.



MOSAIC



STONE



BENEFITS

Natural appeal

- ✓ Re-creates the aesthetics and feeling of natural materials (ceramics, stones)
- ✓ Naturally antislip

Resistant and safe

- ✓ Superior mechanical resistance
- ✓ UV and weather resistant
- ✓ Bio-shield: not affected by micro-organism

Application-friendly

- ✓ Flexible, adapts to all shapes
- ✓ Quick and cheaper to apply compared to alternatives (ceramic tiles)

FEATURES

THICKNESS	1.5 / 1.8 mm
DIMENSIONS OF THE ROLL	25 m x 1.65m
ROLLS PER PALLET	18 / 12



ARMONIA 3D

POOL LINER



PROPERTIES	TEST METHOD	RESULTS
Tensile strength (N/5cm)	EN 12311-2 met. A	≥ 1100
Elongation at maximum tensile force (%)	EN 12311-2 met. A	15-30
Tear resistance (N)	EN 12310-2	≥ 180
CaCO ₃ content (%)	EN 15836 - 2 ann. A	3
Joints : peel resistance (N/5cm)	EN 12316-2	80
Dimensional stability (%)	EN 1107-2	0.5
Resistance to streptovorticilium reticulum bacteria	EN ISO 846 met. C Strain: ATCC 25607	Absence of stains

DISCOVER ARMONIA 3D SHADES



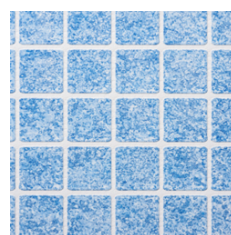
Sensitive Black



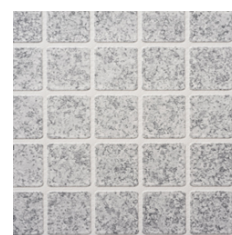
Sensitive Bali



Sensitive Dune



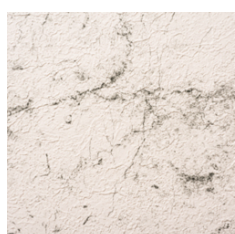
Spirit Ceram Blue



Spirit Ceram Grey



Sensitive Grey



Sensitive White



Sensitive Sand



Mosaic Grey



Mosaic White

Find out more on www.soprema.asia or at info@soprema.com.sg

