



WATERPROOFING

# SOPRALENE SOPRASUN

## BITUMINOUS WATERPROOFING

ROOFS

PLAZA DECKS

SBS AND APP MODIFIED BITUMEN MEMBRANES





# SOPRALENE SOPRASUN

PROVEN TECHNOLOGY FROM **OVER 100 YEARS**  
OF INDUSTRY EXPERIENCE

SOPREMA offers a wide range of products manufactured with SBS and APP modified bitumen. SBS and APP modified bitumen is a proven technology providing the utmost durability and reliability due to the products' redundancy, which ensures watertight structures.

Since 1908, SOPREMA has been known for its advanced research and development capabilities that do not follow trends, but set the mark for the competition to follow!

## GUARANTEED LONGEVITY

Today's membranes boast exceptional performance in terms of strength, reliability and service life. SOPRALENE and SOPRASUN waterproofing systems are composed of expertly blended SBS and APP elastomeric bitumen and high-resistance reinforcement that guarantee longevity.

In addition to their superior physical characteristics, SOPRALENE and SOPRASUN bituminous systems complement all forms of architecture with new technology and countless finishes.

## BENEFITS

- Superior technical performance
- Aesthetic finish
- Easy to install
- Guaranteed longevity
- Solutions for high and low temperatures



## MORE ABOUT BITUMINOUS TECHNOLOGIES

Bitumen is a form of waterproofing and road building material that has been used in various forms since ancient times. At SOPREMA, we have been developing bituminous solutions for over 100 years – all designed to protect flat and pitched roofs, domed structures, terraces, and courtyards from rainfall. An estimated 102 million tons of bitumen is used globally. The bitumen used in waterproofing is largely split between two types of modified bitumen: elastomeric SBS and APP plastomer.

### MODIFIED BITUMEN

By adding other materials to the bitumen, manufacturers can create a longer-lasting, more durable product while giving it either plastic or rubber properties. Modifying bitumen gives it the ability to withstand a wide range of temperatures, and superior weatherproofing.

### APP BITUMEN

APP modified bitumen is a plastic bitumen blend, which is modified using plastic in the form of atactic polypropylene (APP). As installers start torch-applying APP, this plastic begins to melt at a point of 150 °C, where it liquefies into a wax-like substance which acts as an almost free-flowing liquid that can be mopped across a surface. APP has a **high temperature tolerance** when heated, so it is more user-friendly for installers.

This **easy melting** makes APP bitumen popular on the smaller roofs of residential properties or commercial flat roofs.

### SBS BITUMEN

SBS modified bitumen consists of bitumen with a synthetic rubber modification – the addition of styrene-butadiene-styrene (SBS). It does not melt in the same way as APP; offering a "sticky" melt which increases as it gets hot. This lack of liquid flow means it takes less heat and less time to install compared to APP. SBS systems can also be installed with cold adhesive on projects where open flames are not permitted.

Because of the rubber used in its constitution, SBS modified bitumen is **more flexible** compared to the plastic used in APP. This flexibility means it has very good recovery properties, making it capable of withstanding stresses created by wind, temperature fluctuations, and expansion and contraction.

Despite its faster installation times, SBS modified bitumen is **not affected by oxidation or aging**.

## WHICH TYPE OF BITUMEN SHOULD ROOFERS USE?

Ultimately, selecting the actual type of modified bitumen **depends on your project**. To reduce installation time or to avoid the use of open flame, SBS modified bitumen gives roofers the versatility needed whilst keeping the same level of hard-wearing weatherproofing. However, because APP modified bitumen is more forgiving when installed under hot-melt conditions, it may be preferable. SOPREMA offers industry-leading warranties for all its bitumen systems and support for all of its products.



# EXPERTISE

SOPRALENE and SOPRASUN range of bituminous membranes includes a complete offering of primers, vapour barriers, underlayers, capping sheets, flashings and accessories, providing high performance solutions for new build and refurbishment roofing applications.

## BASE SHEETS

SOPRALENE FLAM  
180



SOPRASUN PLUS 3



TECHNOLOGY	
SBS modified bitumen	APP modified bitumen
DIMENSIONS	
10 x 1 m	
THICKNESS	
3 mm	
REINFORCEMENT	
Non-woven polyester mesh	
SURFACE/UNDERFACE	
Thermofusible plastic film Thermofusible plastic film	Sand Thermofusible plastic film

COLVENT FLAM  
180 TG



TECHNOLOGY
SBS modified bitumen
DIMENSIONS
10 x 1 m
THICKNESS
3 mm
REINFORCEMENT
Non-woven polyester mesh
SURFACE/UNDERFACE
Thermofusible plastic film Bitumen ribbon strips protected by a thermofusible plastic film

## ADDED VALUE

The ribbon strips are arranged in a pattern to vent vapor pressure between the substrate and COLVENT FLAM 180 TG membrane.



## CAP SHEETS

SOPRALENE FLAM  
180 GR



SOPRASUN PLUS 4.5KG  
MINERAL



TECHNOLOGY	
SBS modified bitumen	APP modified bitumen
DIMENSIONS	
8 x 1 m	10 x 1 m
THICKNESS	
4 mm	
REINFORCEMENT	
Non-woven polyester mesh	
SURFACE/UNDERFACE	
Ceramic-coated slates/granules Thermofusible plastic film	Ceramic coated slates Thermofusible plastic film



SOPRALENE FLAM  
JARDIN



SOPRAGUM  
GARDEN



TECHNOLOGY	
SBS modified bitumen	APP modified bitumen
DIMENSIONS	
8 x 1 m	10 x 1 m
THICKNESS	
3.9 mm	4 mm
REINFORCEMENT	
Non-woven polyester mesh	
SURFACE/UNDERFACE	
Granules Thermofusible plastic film	Sand Thermofusible plastic film
ADDED VALUE	
The coating mass and reinforcement contain a root-repellent substance to prevent roots from perforating the waterproofing system.	



# INNOVATION

## HIGH-PERFORMANCE FLAMELESS SOLUTION

### SOPRALENE STICK HR GR

SOPRALENE STICK HR GR is THE ideal solution for projects where a flame is not permitted or desired. This cap sheet membrane provides multiple configurations of systems tailored to the needs of the sites on which safety is a prime issue (schools, hospitals, etc.).



#### TECHNOLOGY

SBS modified bitumen

#### DIMENSIONS

10 x 1m

#### THICKNESS

3.8 mm

#### REINFORCEMENT

Composite

#### SURFACE/UNDERFACE

Granules  
Self-adhesives, covered with a release protection film

#### ADDED VALUE

- Compatible with different types of SBS base sheet membranes including SOPRALENE STICK HR 40 self-adhesive membrane and SOPRAFIX BASE mechanically fixed membrane
- Elimination of propane-powered tools
- Incomparable dimensional stability and excellent resistance to elongation and puncture due to composite reinforcement
- Superior waterproofing thanks to DUO SELVEDGE technology



Du Sentier School - Drummondville

## DUO SELVEDGE TECHNOLOGY

For the safest installation, SOPRALENE STICK HR GR is provided with DUO SELVEDGE, a unique technology developed and patented by SOPREMA in 2004, which is specifically adapted to this cap sheet membrane. On the full width of DUO SELVEDGE, a first part is self-adhesive. The remaining portion is then safely sealed with a hot air gun. This provides additional waterproofing safety at overlaps.



**DUO SELVEDGE**  
TECHNOLOGY





## COMPLEMENTARY PRODUCTS AND ACCESSORIES



### ANTIROCK PRIMER

ANTIROCK PRIMER is a blend of SBS modified bitumen with fast-evaporating solvents and adhesive enhancing additives used to prepare concrete and metal surfaces before the installation of bitumen-based waterproofing membranes.



### ELASTOCOL 500

ELASTOCOL 500 is a cold-applied bitumen primer composed of elastomeric bitumen and volatile solvents. It is compatible with many surfaces: concrete, metal, or wood substrate.



### ELASTOCOL STICK

ELASTOCOL STICK is a cold-applied primer composed of SBS synthetic rubbers, adhesion-enhancing resins and volatile solvents. It is used to enhance the adhesion of self-adhesive membranes on various substrates.



### ALSAN FLASHING WITH FLEECE

ALSAN FLASHING is a polyurethane/bitumen liquid waterproofing membrane used in combination with FLASHING REINFORCEMENT for sealing around penetrations.



### SOPRAVAP'R

SOPRAVAP'R is a self-adhesive vapor barrier membrane composed of a tri-laminated woven polyethylene facer and SBS-modified bitumen. The underface is covered with a silicone release film.



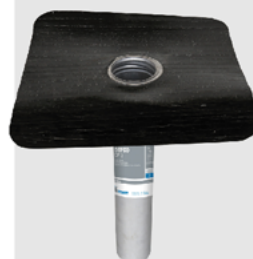
### AERISOL FLAM

AERISOL FLAM is a perforated bituminous separating sheet designed for partial bonding of torch-applied waterproofing sheets. The surface and underface are covered with a thermofusible film.



### SOPRAMASTIC

SOPRAMASTIC is multi-purpose solvent-based mastic containing SBS modified bitumen, fibres and mineral fillers. It is an ideal complement for bituminous waterproofing membranes and is used as jointing mastic, caulking material and joint filler. It is compatible with bituminous materials and ensures good waterproofing.



### SOPREMA DRAIN EP

SOPREMA DRAIN EP is a range of roofing waterproofing accessories which includes drains, vents and roof outlets. Composed of a flexible self-adhesive SBS-modified bitumen deck flange, SOPREMA DRAIN EP range of accessories offer an exceptional adhesion to SBS underlayment membranes.

## APPLICATIONS

### FLAT ROOFS AND PLAZA DECKS

Fully reinforced bituminous waterproofing systems designed for flat roofing applications and plaza decks.



### BARREL & DOME ROOFS

Fully reinforced bituminous waterproofing systems for barrel and dome structures.



### BALLASTED ROOFS

Fully reinforced bituminous waterproofing systems for ballasted and inverted roofs.



### GREEN ROOFS

Fully reinforced, root resistant waterproofing systems for green roof applications.



### COMPLEX PROFILE ROOFS

Fully reinforced, flexible bituminous waterproofing systems for projects with complex profiles and details.





# MINI-MACADEN®

INSTALL 4 TIMES MORE MEMBRANES PER HOUR!

MINI-MACADEN is a bituminous membrane installation machine developed by SOPREMA. Propelled and self-guided, it unrolls, welds, and smoothes base sheet and cap sheet membranes. Delivered in a robust transport case, it can apply up to 1,000 m<sup>2</sup> per day with a team of four workers, regardless of the outside temperature (> 0 °C) or wind conditions.

## BENEFITS

### FAST

- Installs thermofusible membranes in record time (**4 times as many membranes per hour** compared to manual installation).

### EFFICIENT

- Lays the base sheet and cap sheet membranes while **minimizing the risk of defects**.

### COST EFFECTIVE

- Requires **up to 75% less propane** than manual installation.

### FLEXIBLE

- Can be used on **roofs, bridges, viaducts, and parking decks**.

### SAFE

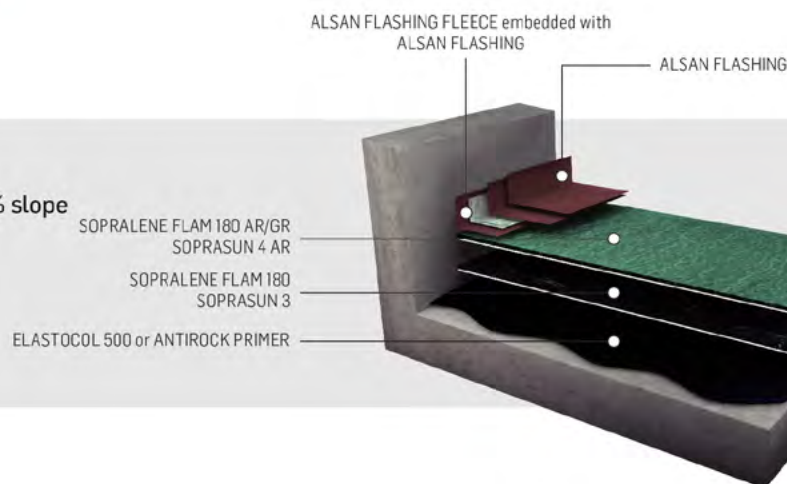
- **CSA certified**, it meets the highest safety standards.



## BESPOKE ROOFING SYSTEMS

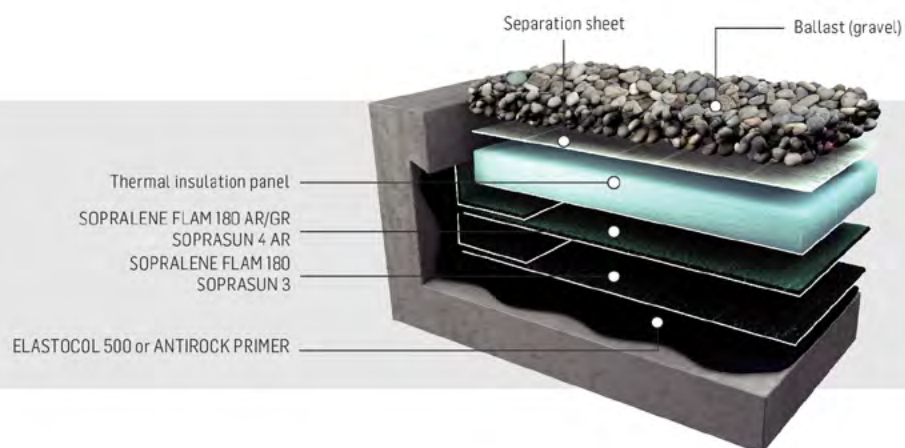
### SELF-PROTECTED ROOF

Reinforced concrete substrate |  $\geq 0\%$  slope  
Non-trafficable



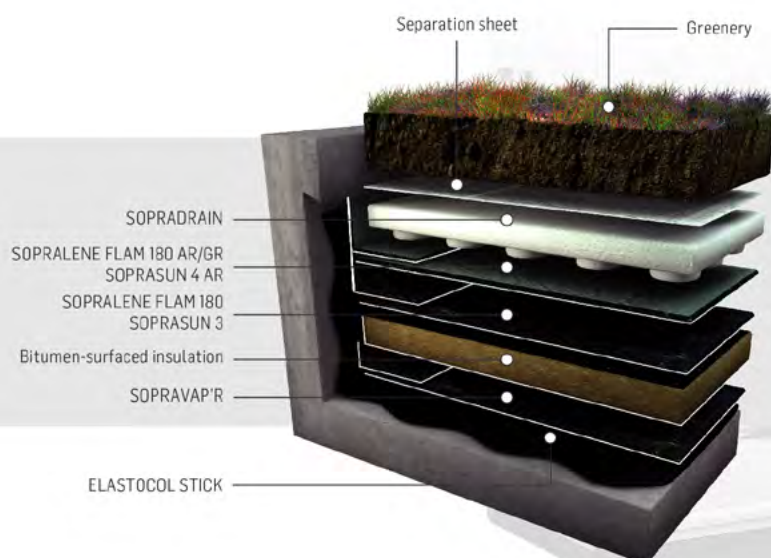
### BALLAST ROOF

Concrete substrate | 0 – 5% slope  
Non-trafficable



### SOPRANATURE GREEN ROOF

Reinforced concrete substrate | 0 – 20% slope  
Steel deck substrate | 3 – 20% slope  
Timber deck substrate | 3 – 20% slope  
Non-trafficable







## CERTIFICATION

Soprema's bituminous waterproofing systems are BBA certified and FM approved. They are also complying with Australia's AS 4654 Standard and BRANZ Certifications.



Soprema's bituminous membranes are manufactured according to the principles of sustainable construction, respecting the environment, human resources and the economy.

## UNRESTRICTED DESIGN

The SOPRALENE and SOPRASUN bituminous waterproofing range offers flexible design through a wide range of colors and finishes. The SOPRALENE waterproofing cap sheets are available with varied finishes to suit specific aesthetic requirements. Alongside these aesthetic options, SOPREMA also offers green roof systems and ancillary components for ballasted or paved roof finishes, enabling designers to create a functional roof space.

### CAP SHEET COLORS



Standard colour  
GREY



BLACK



MATISSE  
BROWN



GREEN



WHITE

\*Colours available vary by region



## PAVED FINISHES

SOPRAPLOTS are available from SOPREMA, providing a solution for paved finishes without compromising the integrity of the waterproofing system.

## GREEN ROOFS

Green roofs are the perfect way to create sustainable building envelopes, promoting biodiversity and turning what would otherwise be wasted space into useful areas for people, wildlife, and plants. SOPREMA supplies a wide range of green roof systems, to suit every structure. Full design and specification services are available to assist you with your project.



## INNOVATION SINCE 1908

SOPREMA has developed around the idea that the quality, durability and reliability of materials must match builders' ambitions and expectations. For more than 100 years, SOPREMA has been using its expertise to develop a variety of high-end products that meet or exceed all the requirements of the construction field.



SOPREMA is an international manufacturer specializing in the production of waterproofing and insulation products, as well as vegetative and soundproofing solutions, for the building and civil engineering sectors.

### SOPREMA ASIA PACIFIC

#### SINGAPORE

+65 6818 6353

Level 39, Marina Bay  
Financial Centre,  
Tower 2, 10 Marina  
Boulevard,  
Singapore, 018983

[info@soprema.com.sg](mailto:info@soprema.com.sg)

#### HONG KONG

+852 3552 2848

Level 12, 1 Peking Road  
Tsim Sha Tsui,  
Kowloon, Hong Kong,  
SAR,  
China

[info@soprema.hk](mailto:info@soprema.hk)

#### CHINA

+86 21 6252 1882

Unit E, Level 9, Block 4,  
269 Tongxie Road  
Shanghai,  
China, 200335

[info@soprema.cn](mailto:info@soprema.cn)

#### AUSTRALIA

+61 8046 7464

L 35,  
100 Barangaroo Avenue,  
Sydney, NSW  
Australia, 2000

[info@soprema.com.au](mailto:info@soprema.com.au)