



COMPLEMENTARY  
SOLUTIONS

# ALSAN<sup>®</sup> FLASHING

## LIQUID WATERPROOFING

ROOFS

FOUNDATIONS

POLYURETHANE BITUMINOUS RESIN FOR FLASHING, DETAILS AND  
MAINTENANCE APPLICATIONS





# ALSAN<sup>®</sup> FLASHING

A challenge for designers and contractors installing waterproofing systems is always the interface with other components, penetrations, and structural details. Conventional waterproofing systems with bitumen and plastic sheets have been tried and tested over the years and proved very successful. These systems are complemented perfectly by ALSAN FLASHING, a unique polyurethane bituminous resin specifically formulated for liquid-applied flashing, details, and maintenance applications.

ALSAN FLASHING resins can be used to waterproof penetrations of all types, perfectly and lastingly. In addition to a range of standard colors for the waterproofing resins, the surface can also be coated with a RAL-based system finish.

## BENEFITS

- Conforms easily to any geometrical or irregular shapes.
- Superior protection against moisture.
- Quick-curing seamless flashing that matches granule cap sheet membranes.
- Single-component flashing solution: no catalyst needed and no wasted product.
- Great for quick, cost-effective repairs.

## ADVANCED TECHNOLOGY

ALSAN FLASHING is a single-component, moisture-curing compound, patented polyurethane bitumen resin that utilizes low solvent technologies. Used in combination with FLASHING REINFORCEMENT, ALSAN FLASHING provides an extremely durable and easy-to-apply watertight, puncture and UV-resistant flashing solution. The variety of suitable substrates, including concrete, masonry, wood, metal, PVC pipes and SBS granule and sand-surfaced sheets, make ALSAN FLASHING extremely versatile.



## INSTALLATION INTRUCTIONS

**No Primer, No Mixing, No Problems**



1 Remove all loose materials and granules from the area with a metallic brush. The area should be clean, dry and free of loose particles.



2 Apply a base coat of ALSAN FLASHING with a brush (500 g/m<sup>2</sup>) on the surface, lay FLASHING REINFORCEMENT and embed it in the base layer.



3 Apply the first layer of ALSAN FLASHING (900 g/m<sup>2</sup>).



4 Apply the second layer of ALSAN FLASHING (700 g/m<sup>2</sup>).



5 For aesthetic finish (optional), add decorative granules or aluminum color with SOPRALASTIC 124 ALU waterproofing coating.

### Additional info and tips:

- ALSAN FLASHING is UV-resistant
- Application temperatures: 5 to 35 °C
- Service temperatures: -30 to 150 °C
- Drying time: 2 hours per layer
- Curing time: 3 days
- Do not use if rain or snow is forecast within 12 hours after the installation.



## UNRESTRICTED DESIGN

ALSAN FLASHING offers flexible design through a wide range of colors and finishes. Indeed, decorative colored granules can be added to ALSAN FLASHING top coat to suit specific aesthetic requirements. White and aluminum finishes are also available within SOPREMA's product range.

Alongside these aesthetic options, SOPREMA also offers an anti-root penetration solution for green roof systems, enabling designers to create green and waterproofed roof spaces.



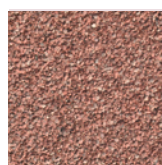
## GRANULE COLOURS



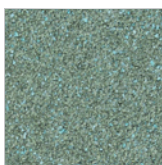
Standard colour  
GREY



BLACK



MATISSE  
BROWN

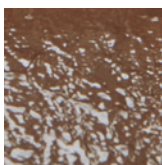


GREEN



WHITE

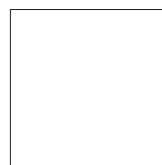
## FINISH COLOURS



DARK BROWN



ALUMINIUM



PURE WHITE

\*Colours available vary by region

## GREEN ROOFS

Green roofs are the perfect way to create sustainable building envelope solutions – promoting biodiversity and turning what would otherwise be wasted space into useful areas for people, wildlife and plants.

To suit every green roof structure and design, SOPREMA offers a wide range of products including ALSAN FLASHING JARDIN with anti-root penetration properties. Full design and specification advice is available to assist you with your project.



## BESPOKE SYSTEMS

### SELF-PROTECTED ROOF UPSTAND WATERPROOFING

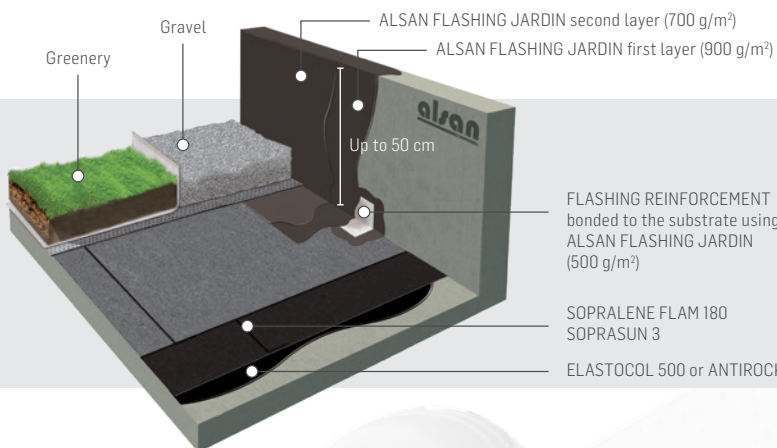
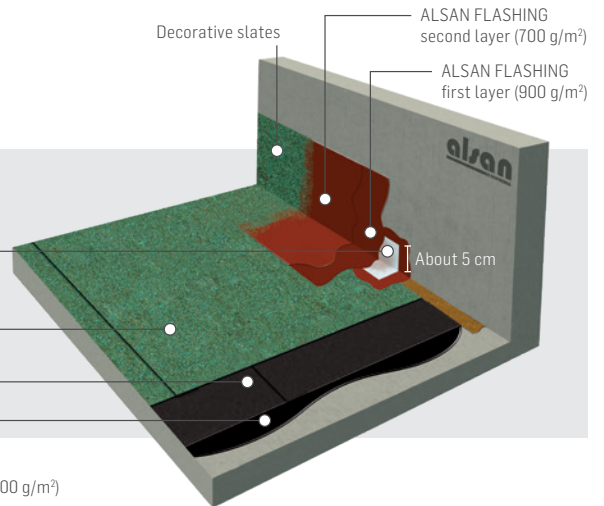
Reinforced concrete substrate  
Non-trafficable

FLASHING REINFORCEMENT  
bonded to the substrate  
using ALSAN FLASHING (500 g/m<sup>2</sup>)

SOPRALENE FLAM 180 AR/GR  
SOPRASUN 4 AR

SOPRALENE FLAM 180  
SOPRASUN 3

ELASTOCOL 500 or ANTIROCK PRIMER



### GREEN ROOF AND GARDEN TERRACE UPSTAND WATERPROOFING

Reinforced concrete substrate  
Non-trafficable

FLASHING REINFORCEMENT  
bonded to the substrate using  
ALSAN FLASHING JARDIN  
(500 g/m<sup>2</sup>)

SOPRALENE FLAM 180  
SOPRASUN 3

ELASTOCOL 500 or ANTIROCK PRIMER

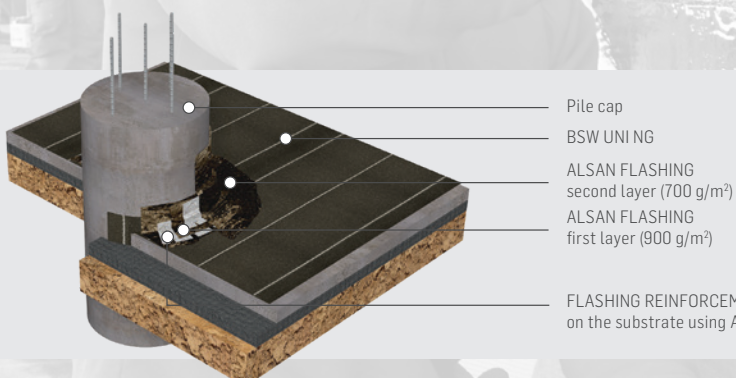
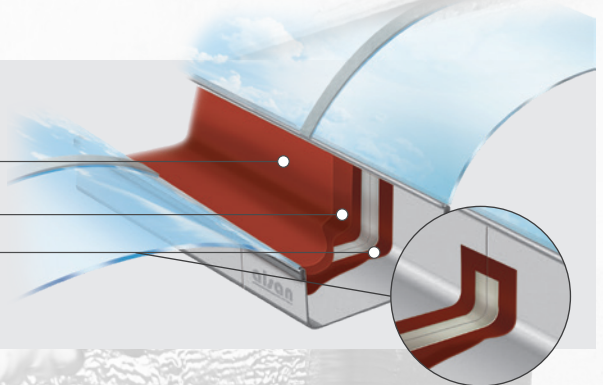
### GUTTER WATERPROOFING

Steel substrate  
Non-trafficable

ALSAN FLASHING  
second layer (700 g/m<sup>2</sup>)

ALSAN FLASHING first layer (900 g/m<sup>2</sup>)

FLASHING REINFORCEMENT  
bonded to the substrate using ALSAN FLASHING (500 g/m<sup>2</sup>)



### BASEMENT AND UNDERGROUND DETAILING WATERPROOFING

Reinforced concrete substrate  
Non-trafficable

FLASHING REINFORCEMENT bonded  
on the substrate using ALSAN FLASHING (500g/m<sup>2</sup>)

## INNOVATION SINCE 1908

SOPREMA has developed around the idea that the quality, durability and reliability of materials must match builders' ambitions and expectations. For more than 100 years, SOPREMA has been using its expertise to develop a variety of high-end products that meet or exceed all the requirements of the construction field.



SOPREMA is an international manufacturer specializing in the production of waterproofing and insulation products, as well as vegetative and soundproofing solutions, for the building and civil engineering sectors.

### SOPREMA ASIA PACIFIC

#### SINGAPORE

+65 6818 6353

Level 39, Marina Bay  
Financial Centre,  
Tower 2, 10 Marina  
Boulevard,  
Singapore, 018983

[info@soprema.com.sg](mailto:info@soprema.com.sg)

#### HONG KONG

+852 3552 2848

Level 12, 1 Peking Road  
Tsim Sha Tsui,  
Kowloon, Hong Kong,  
SAR,  
China

[info@soprema.hk](mailto:info@soprema.hk)

#### CHINA

+86 21 6252 1882

Unit E, Level 9, Block 4,  
269 Tongxie Road  
Shanghai,  
China, 200335

[info@soprema.cn](mailto:info@soprema.cn)

#### AUSTRALIA

+61 8046 7464

L 35,  
100 Barangaroo Avenue,  
Sydney, NSW  
Australia, 2000

[info@soprema.com.au](mailto:info@soprema.com.au)