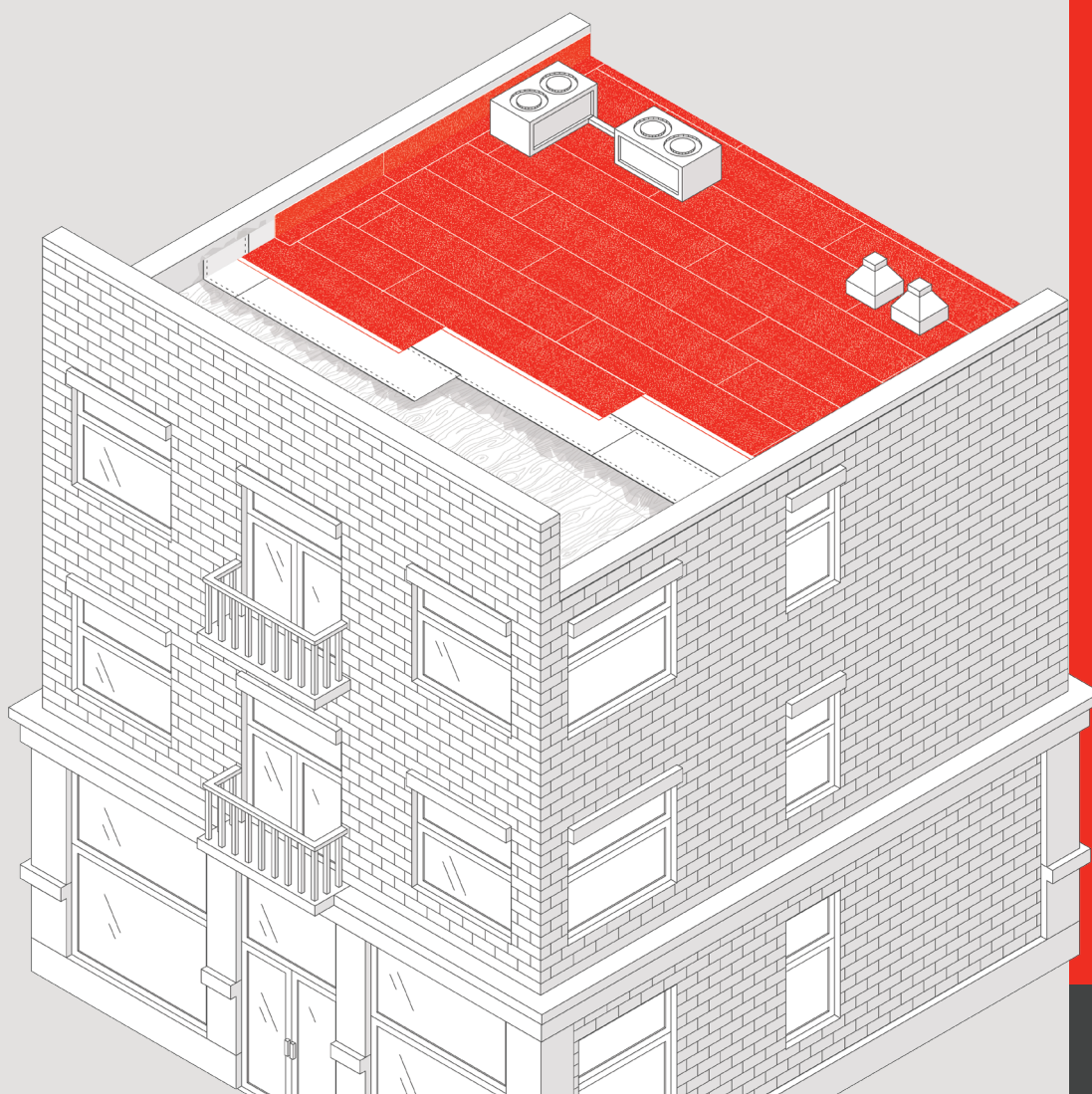


# SA CAP ROOFING SYSTEMS



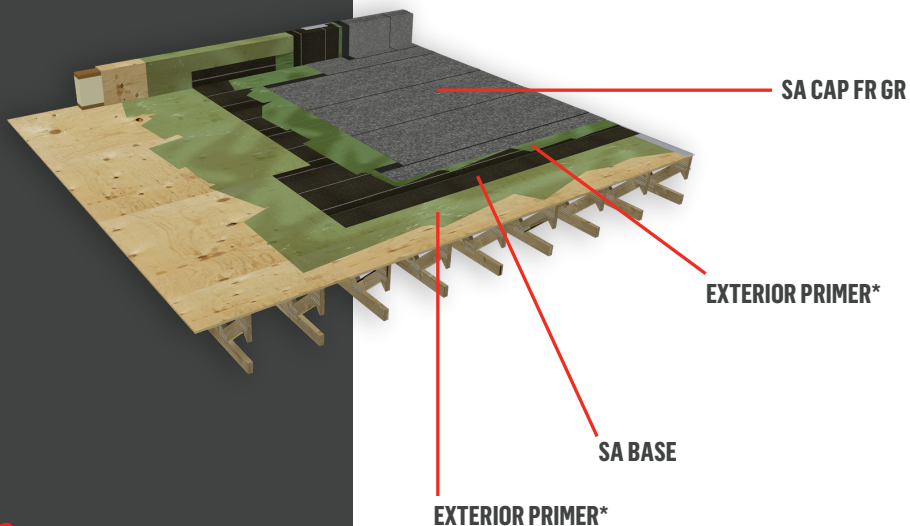
RESISTO<sup>®</sup>

## TWO-PLY SA BASE + SA CAP FR GR

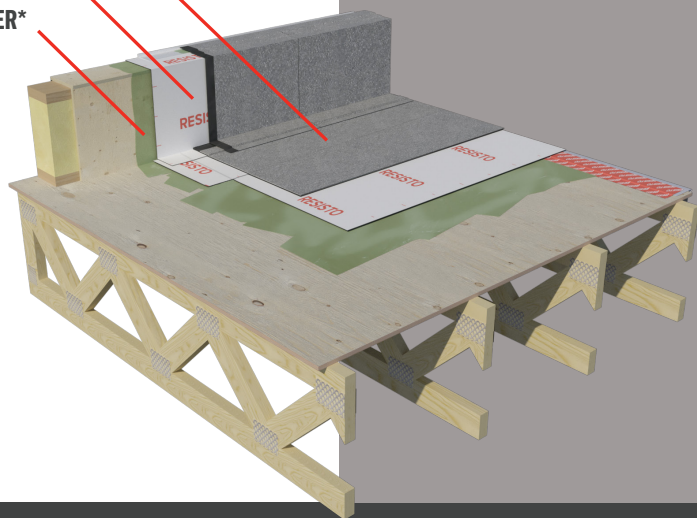
ONLY UL 790 CLASS A CERTIFIED SYSTEM

THE RESISTO TWO-PLY ROOFING SYSTEM IS GUARANTEED FOR 20 YEARS AGAINST ALL MANUFACTURING DEFECTS.

THIS WARRANTY APPLIES TO LOW-SLOPE OR VERY LOW SLOPE RESIDENTIAL ROOFS WITH SLOPES UP TO 1/2:12 OR 4 % THAT DRAIN TO THE OUTSIDE EDGE AND THAT DO NOT HAVE INTERNAL ROOF DRAINS.



SA CAP GR  
SA SMOOTH PLY 40  
PRIMER\*



## TWO-PLY SA SMOOTH PLY 40 + SA CAP GR

THE RESISTO TWO-PLY ROOFING SYSTEM IS GUARANTEED FOR 20 YEARS AGAINST ALL MANUFACTURING DEFECTS.

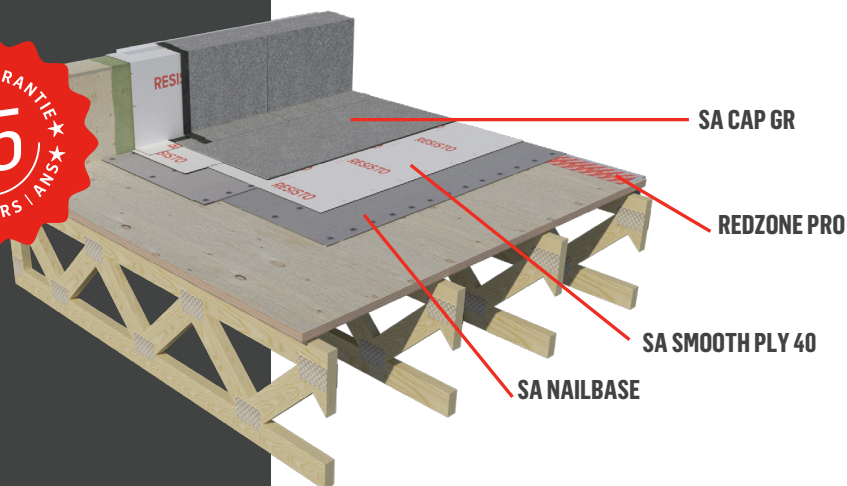
THIS WARRANTY APPLIES TO LOW-SLOPE OR VERY LOW SLOPE RESIDENTIAL ROOFS WITH SLOPES FROM 1/8:12 OR 1 % THAT DRAIN TO THE OUTSIDE EDGE AND THAT DO NOT HAVE INTERNAL ROOF DRAINS.

## THREE-PLY SA NAILBASE + SA SMOOTH PLY 40 + SA CAP GR

A UL 790 CLASS C RATED SYSTEM FAST AND EASY TO INSTALL

THE RESISTO THREE-PLY ROOFING SYSTEM IS GUARANTEED FOR 25 YEARS AGAINST ALL MANUFACTURING DEFECTS.

THIS WARRANTY APPLIES TO LOW-SLOPE OR VERY LOW SLOPE RESIDENTIAL ROOFS WITH SLOPES FROM 1/8:12 OR 1% UP, THAT DRAIN TO THE OUTSIDE EDGE AND THAT DO NOT HAVE INTERNAL ROOF DRAINS.



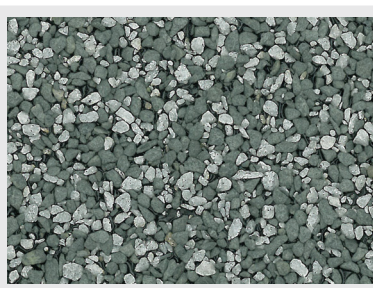
SA NAILBASE COULD BE REPLACED BY ANOTHER LAYER OF SA SMOOTH PLY 40 AND STILL BE GUARANTEED FOR 25 YEARS.

\*PRIMER IS ALWAYS RECOMMENDED. PRIMER IS REQUIRED ON SOME SUBSTRATES SUCH AS CONCRETE, METAL AND SURFACES THAT ARE NOT IDEALLY CLEAN. SEE OUR TDI, FBC AND MIAMI-DADE APPROVALS FOR REQUIREMENTS AND WIND UPLIFT RATINGS.





**Brown**  
SA CAP GR - 08270  
SA CAP FR GR - 09220



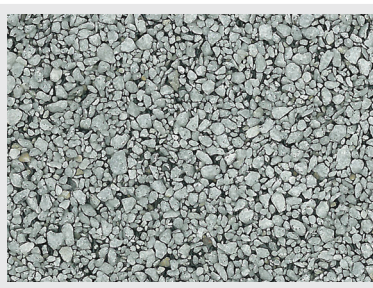
**Gray**  
SA CAP GR - 08271  
SA CAP FR GR - 09221



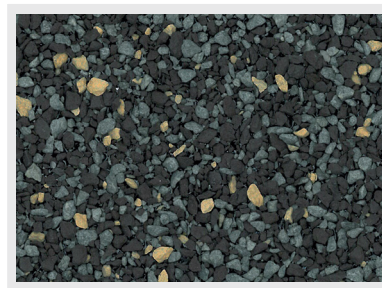
**Black**  
SA CAP GR - 08272  
SA CAP FR GR - 09222



**Green**  
SA CAP GR - 08273  
SA CAP FR GR - 09223



**White**  
SA CAP GR - 08274  
SA CAP FR GR - 09224



**Weatherwood**  
SA CAP GR - 08275  
SA CAP FR GR - 09225



**Tan**  
SA CAP GR - 08276  
SA CAP FR GR - 09226



**Terracotta**  
SA CAP GR - 08277  
SA CAP FR GR - 09227



**LASTOBOND PRO HT**  
NORTH - 10107 BOX 10007 (NO BOX)  
SOUTH - 10108 BOX 10009 (NO BOX)



**SA BASE**  
07022



**SA SMOOTH PLY 40**  
10167



**SA NAILBASE**  
06022

## SELF-ADHESIVE GRANULATED CAP SHEET MEMBRANE

SA CAP GR | SA CAP FR GR

SA CAP GR and SA CAP FR GR ARE SELF-ADHESIVE CAP SHEET MEMBRANES COMPOSED OF SBS MODIFIED BITUMEN WITH A COMPOSITE REINFORCEMENT. THE SURFACE IS PROTECTED BY GRANULES, WHILE THE UNDERFACE IS COVERED WITH A SPLIT-BACK SILICONE RELEASE FILM.



THICKNESS	DIMENSIONS	GROSS/NET COVERAGE	ROLL WEIGHT
141 mil (3.6 mm)	39 in × 33 ft (1 m × 10 m)	107 ft <sup>2</sup> (10 m <sup>2</sup> ) 99 ft <sup>2</sup> (9.2 m <sup>2</sup> )	86 lb (39 kg)

SURFACE	UNDERFACE	UL 790*
Granuled	Self-adhesive, covered with a split-back silicone release film	SA CAP GR - Class C SA CAP FR GR - Class A

\*Please refer to certified systems

## SELF-ADHESIVE BASE SHEET MEMBRANE

SA BASE

SA BASE IS A SELF-ADHESIVE BASE SHEET MEMBRANE COMPOSED OF SBS MODIFIED BITUMEN WITH A GLASS MAT REINFORCEMENT. THE SURFACE IS SANDED, WHILE THE UNDERFACE IS COVERED WITH A SPLIT-BACK SILICONE RELEASE FILM.



THICKNESS	DIMENSIONS	GROSS/NET COVERAGE
88 mil (2.2 mm)	39 in × 49 ft (1 m × 15 m)	159 ft <sup>2</sup> (15 m <sup>2</sup> ) 146 ft <sup>2</sup> (13.6 m <sup>2</sup> )

ROLL WEIGHT	SURFACE	UNDERFACE
77 lb (35 kg)	Sanded	Self-adhesive, covered with a split-back silicone release film

## SELF-ADHESIVE BASE PLY MEMBRANE

SA SMOOTH PLY 40

SA SMOOTH PLY 40 IS A SELF-ADHESIVE BASE PLY MEMBRANE COMPOSED OF SBS MODIFIED BITUMEN. THE SURFACE IS A UV RESISTANT TRI-LAMINATED WOVEN POLYETHYLENE, WHILE THE SELF-ADHESIVE UNDERFACE IS COVERED WITH A SPLIT-BACK SILICONE RELEASE FILM.



THICKNESS	DIMENSIONS	GROSS/NET COVERAGE
40 mil (1.0 mm)	39 in × 65 ft (1 m × 20 m)	211 ft <sup>2</sup> (20 m <sup>2</sup> ) 108 ft <sup>2</sup> (10 m <sup>2</sup> )

ROLL WEIGHT	SURFACE	UNDERFACE
40 lb (20 kg)	Tri-laminated woven polyethylene	Self-adhesive, covered with a split-back silicone release film

## SA NAILBASE

SA NAILBASE IS COMPOSED OF SBS MODIFIED BITUMEN AND A FIBERGLASS MAT REINFORCEMENT. IT HAS A SELF-ADHERED SIDE LAP. THE ANTI-SLIP SURFACE IS MADE OF CUSTOMIZED POLYPROPYLENE, WHICH MAXIMIZES THE ADHESION OF THE BASE SHEET MEMBRANE IN A TWO OR THREE-PLY SYSTEM AND THE CAP SHEET IN SINGLE-PLY SYSTEM.



THICKNESS	DIMENSIONS	GROSS/NET COVERAGE
80 mils (2 mm)	39 in × 65 ft (1 m × 20 m)	213 ft <sup>2</sup> (20 m <sup>2</sup> ) 194 ft <sup>2</sup> (18 m <sup>2</sup> )

ROLL WEIGHT	SURFACE	UNDERFACE
50.8 kg (112 lb)	Polypropylene	Sand

### BUILDING PRODUCTS

Roofing Waterproofing Wall Systems Insulation

# RESISTO®

1-855-227-7850 | [resisto.us](http://resisto.us)