



WATERPROOFING

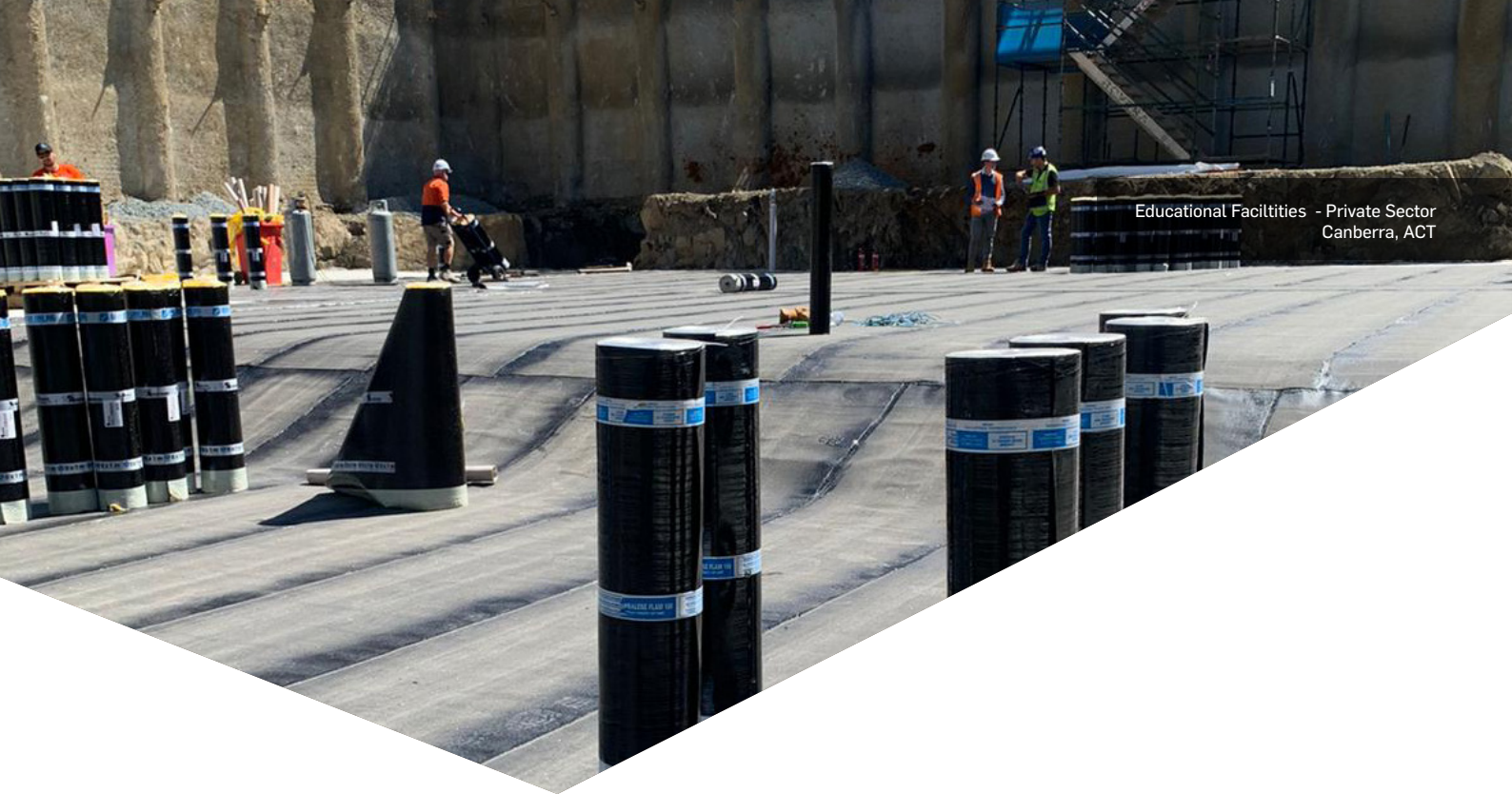
COLPHENE®

BITUMINOUS WATERPROOFING

FOUNDATIONS

PRE-APPLIED AND POST-APPLIED SYSTEM FOR BLIND SIDE AND
BELOW-GRADE WATERPROOFING APPLICATIONS





Educational Facilities - Private Sector
Canberra, ACT

COLPHENE® BSW

PRE-APPLIED SYSTEM

COLPHENE BSW is a fully reinforced pre-applied membrane system designed for horizontal and vertical external blind side waterproofing applications. With its unique design, it can be used near buildings that limit access and excavation.

The membranes are composed of a select blend of high performance SBS-modified bitumen, an ultra-high-strength reinforcement, and a specially designed surface.

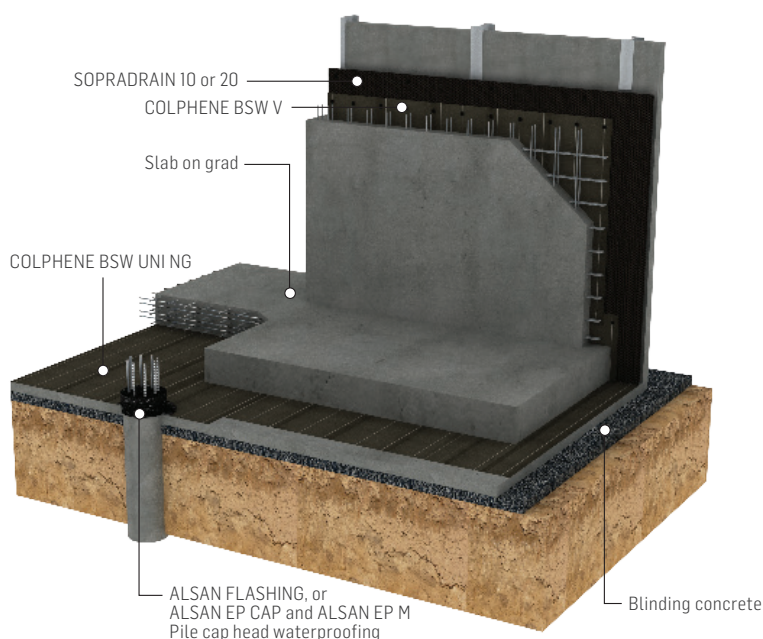
TESTING AND APPROVALS

SOPREMA's COLPHENE BSW membranes have been tested according to EN and ASTM Standards, and are BBA certified. They are also BRANZ appraised, meeting the requirements of NZBC.



BENEFITS

- Excellent adhesion to poured concrete
- Increased resistance to hydrostatic pressure
- Superior resistance to tears and punctures
- Increased protection thanks to DUO SELVEDGE technology



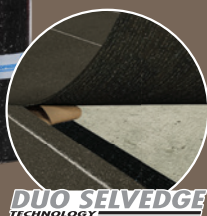
COLPHENE BSW UNI NG

COLPHENE BSW UNI NG is designed for waterproofing applications under horizontal concrete slabs. It is composed of a selected blend of high-performance SBS-modified bitumen, combined with an ultra high strength double reinforcement system.

Application: Loose-laid with heat-welded laps

Surface: Specially engineered carbon dioxide crystals

Underface: Thermofusible Plastic Film



COLPHENE BSW V

COLPHENE BSW V is designed for vertical blind side waterproofing applications. It is composed of high-performance SBS-modified bitumen combined with an ultra-high-strength composite reinforcement.

Application: Self-adhered with heat welded laps

Surface: Specially engineered carbon dioxide crystals

Underface: Silicon Release Film



SUPERIOR ADHESION

The system benefits from the effects of the exothermic reaction that occurs during the concrete's curing process, providing superior adhesion due to a chemical and mechanical bond between the membrane and structural concrete.

CONTINUOUS BOND

Continuous and homogeneous bond to structural concrete.

ADHESIVE STRENGTH

Excellent adhesion to the poured structural concrete surface according to ASTM D903 standard.



The top face of the membrane is made of SBS-modified bitumen and covered with sand. The specially formulated surface softens slightly as the concrete begins to cure, releasing heat. This contributes to the adhesion of the membrane to the concrete, and prevents the ingress or migration of water around the structure.



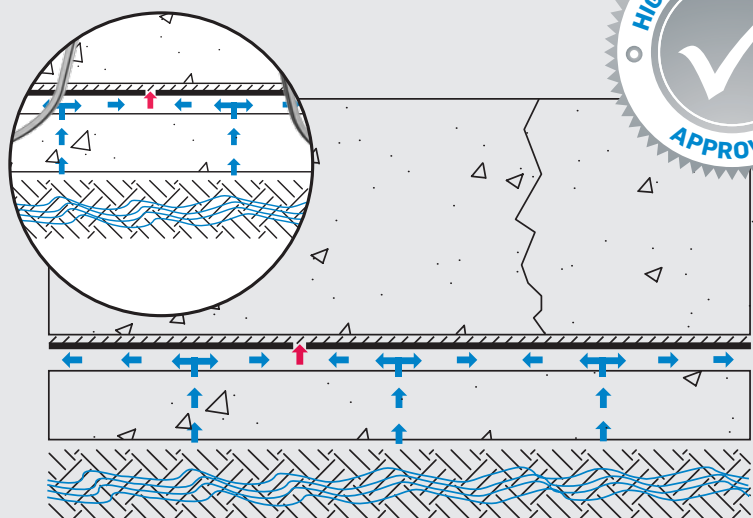
CONCEPTS



SOPREMA's SOLUTION:

COLPHENE BSW Concept
(pre-applied membrane system
that is **fully bonded** to the
structural concrete)

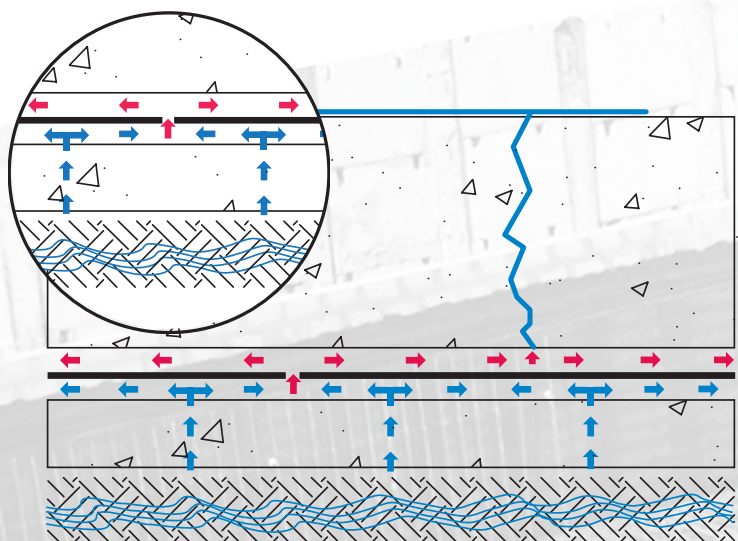
As it is natural for concrete to crack,
it is important to protect it from
water infiltration. The technology and
concept of COLPHENE BSW ensure
a full adhesion of the waterproofing
system to the foundation.



OTHER OFFERINGS
ON THE MARKET:

Concept of a conventional
waterproofing system
(when **not bonded** to the
structural concrete)

When there is water migration
between the waterproofing membrane
and structural concrete, the structure
becomes vulnerable, and corrective
actions are very costly.



COMPLEMENTARY PRODUCTS



ELASTOCOL STICK

Cold-applied primer composed of SBS synthetic rubbers, adhesion-enhancing resins and volatile solvents. It is used to enhance the adhesion of self-adhesive membranes on various substrates.



ALSAN FLASHING

Polyurethane/bitumen liquid waterproofing membrane used in combination with POLYFLEECE for sealing around penetrations.



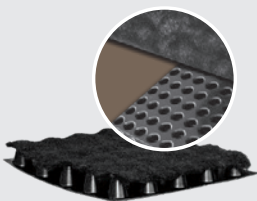
ALSAN EP EM

Two-component, non-sag, high-strength epoxy adhesive, used to bond SOPREMA bituminous and PVC waterproofing membranes to a variety of common building materials on vertical and horizontal surfaces.



ALSAN EP CAP

Two-component, high-performance, pre-filled epoxy grout. It is used for general heavy duty civil engineering applications and for encapsulating pile tops, and in void-filling applications.



SOPRADRAIN 10 & SOPRADRAIN 20

High-density drainage board with a factory-laminated geotextile. It provides protection to the waterproofing system against build-up of water pressure and humidity.



SOPRASWELL NG

Hydrophilic rubber waterproofing strip used for sealing of static construction joints. In contact with water and in confined conditions, swells and stops the water infiltration.



SOPRAHOSE 13 INJECTION SYSTEM

Re-injectable injection hose system, used to carry injection grout along the length of the hose and disperse it into the concrete joint via microports along the hose.



SOPRAJOINT TPE

Transparent TPE waterstop extruded from high-quality raw materials. It is used at construction joints, around the piles, at termination or to prevent the risk of increased water through the structure at critical areas.



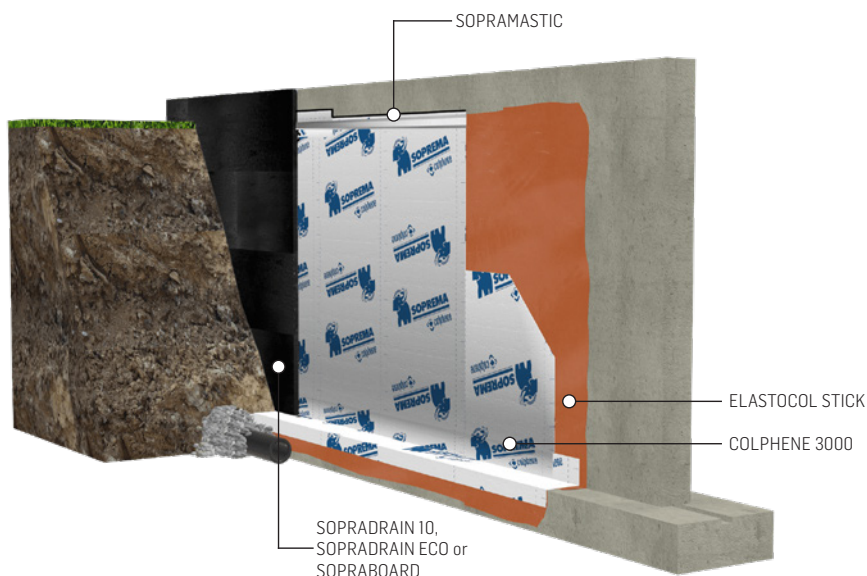
FERNY GROVE STATE HIGH SCHOOL
Brisbane, QLD

COLPHENE® SELF-ADHESIVE POST-APPLIED SYSTEM

COLPHENE self-adhesive membranes are made from the most reliable SBS-modified bitumen in the industry. They are extremely flexible, easy to handle, and fit easily around the sharp contours and angles of concrete footings and foundations.

TESTING AND APPROVALS

SOPREMA's COLPHENE self-adhesive membranes have been tested according to ASTM Standards, and are BBA certified. They are also BRANZ appraised, meeting the requirements of NZBC.



BENEFITS

- Superior flexibility
- Cold-applied, flameless solution
- Puncture resistant with high tensile strength
- Consistent thickness

COLPHENE 3000

COLPHENE 3000 is a self-adhesive membrane designed for foundation walls and other below-grade vertical surfaces.

It is composed of SBS-modified bitumen combined with a tri-laminated woven polyethylene facer. COLPHENE 3000 offers superior puncture and tear resistance as well as tensile strength.

Application: Self-adhered

Surface: Tri-laminated woven polyethylene

Underface: Silicone Release Film



COMPLEMENTARY PRODUCTS



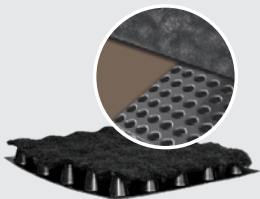
ELASTOCOL STICK

Cold-applied primer composed of SBS synthetic rubbers, adhesion-enhancing resins and volatile solvents. It is used to enhance the adhesion of self-adhesive membranes on various substrates.



SOPRAMASTIC / ALU

Multi-purpose solvent-based mastic containing SBS modified bitumen, fibres and mineral fillers. Ideal complement for bituminous waterproofing membranes, it is used as jointing mastic, caulking material and joint filler.



SOPRADRAIN 10 SOPRADRAIN ECO 10

High-density drainage board with a factory-laminated geotextile. It promotes better flow towards drains, while reducing hydrostatic pressure.



SOPRABOARD

Protection panel composed of two asphalt-saturated glass mat reinforcement covering the waterproofing membrane installed.

INNOVATION SINCE 1908

SOPREMA has developed around the idea that the quality, durability and reliability of materials must match builders' ambitions and expectations. For more than 100 years, SOPREMA has been using its expertise to develop a variety of high-end products that meet or exceed all the requirements of the construction field.

ROOFS WALLS FOUNDATIONS PARKING DECKS BRIDGES ADDITIONAL EXPERTISE



WATERPROOFING



INSULATION



VEGETATIVE
SOLUTIONS



SOUNDPROOFING



ACCESSORY
PRODUCTS

SOPREMA is an international manufacturer specialising in the production of waterproofing and insulation products, as well as vegetative and soundproofing solutions, for the building and civil engineering sectors.

INFO@SOPREMA.COM.AU

[SOPREMA.COM.AU](https://www.soprema.com.au)
