

SOPRAJOINT



ACCESSORY
PRODUCTS

APPLICATIONS

ROOFS

FOUNDATIONS

TECHNICAL DATA SHEET

ANZ-TDS-40-SOPRAJOINT

DESCRIPTION

SOPRAJOINT is a waterproofing membrane manufactured by combining a polyester fabric with SBS-modified bitumen. The underface is covered with a thermofusible plastic film. The top face has an aluminium foil adhered to the centre of the membrane and is covered by a protective silicone paper to be removed during application.

SOPRAJOINT is a waterproofing membrane specifically designed for waterproofing expansion joints. This product is applied only by heatwelding.

FIELD OF APPLICATION

- General roofing
- Foundations

APPLICATION METHOD

- Prior to installation, unroll **SOPRAJOINT** onto the roof surface and allow to relax.
- Place **SOPRAJOINT** in desired position over expansion joint and back roll the product.
- **SOPRAJOINT** is heat welded on both sides of the foil bond breaker. Subsequent approved inter-ply or cap ply membranes are applied to **SOPRAJOINT** via heat welding.
- Used with maximum resulting movement of 20 mm.



FOR COMPLETE INFORMATION ON PRODUCT INSTALLATION, PLEASE CONSULT YOUR SOPREMA REPRESENTATIVE.

PACKAGING

SPECIFICATIONS	SOPRAJOINT
Thickness	4 mm
Dimensions	10 m x 450 mm
Weight	25 kg
Rolls per pallet	32

PROPERTIES

PROPERTIES	STANDARDS	SOPRAJOINT
Top face	-	Silicone release sheet and aluminium foil
Underface	-	Thermofusible plastic film
Reinforcement	-	70 g/m ² polyester fabric
Breaking strength	CAN/CGSB-37.56-M 9th draft	5.0 kN/m
Ultimate elongation at 20 °C	CAN/CGSB-37.56-M 9th draft	120 %
Ultimate elongation at -20 °C	CAN/CGSB-37.56-M 9th draft	100 %
Cold bending	CAN/CGSB-37.56-M 9th draft	-30 °C
Elasticity limit	Internal	40 %
Fatigue resistance, 1 000 cycles	CAN/CGSB-37.56-M 9th draft	No rupture



SOPREMA.COM.AU • +61 (3) 9221 6230

TDS_SOPRAJOINT_05_2021_RA

1/2



ACCESSORY
PRODUCTS

APPLICATIONS

CIVIL WORKS

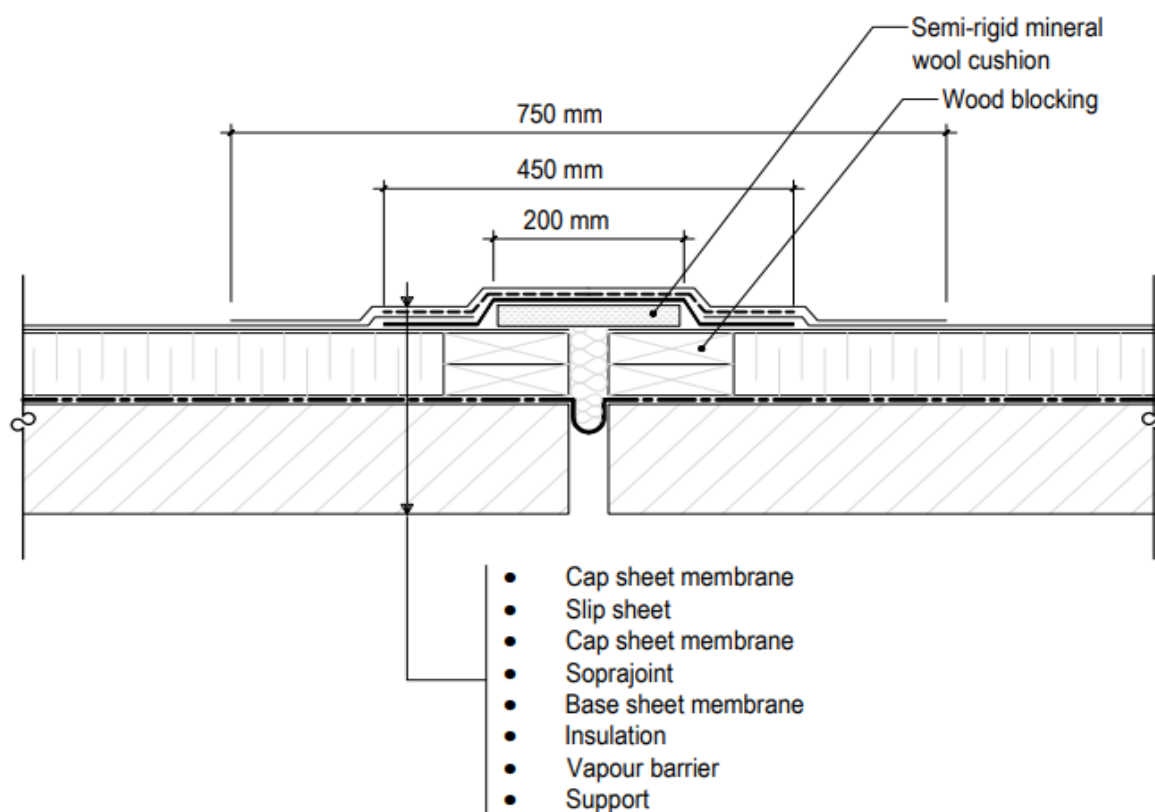
FOUNDATIONS

SOPRAJOINT

TECHNICAL DATA SHEET

ANZ-TDS-40-SOPRAJOINT

APPLICATION



STORAGE AND HANDLING

Store rolls in box and maintain in an upright position to prevent damage. Store rolls in a clean dry location and cover as necessary to protect rolls from environmental damage such as extreme cold, heat, or moisture. Monitor varying environmental conditions during storage, handling and application of SOPRAJOINT.

STATEMENT OF RESPONSIBILITY

The technical information and application advice given in this publication is based on the present state of our best knowledge. As the information herein is of a general nature, no assumption can be made as to a product's suitability for a particular use or application and no warranty as to its accuracy, reliability or completeness either expressed or implied is given other than those required by Commonwealth or State Legislation. The owner, their representative and/or the contractor are responsible for checking the suitability of products for their intended use.



SOPREMA.COM.AU • +61 (3) 9221 6230

TDS_SOPRAJOINT_05_2021_RA

2/2