



ACCESSORY
PRODUCTS

APPLICATIONS

ROOFS

FLAGON PVC WALKWAY

TECHNICAL DATA SHEET

ANZ-TDS-77-FLAGON PVC WALKWAY

DESCRIPTION

FLAGON PVC WALKWAY is Synthetic PVC-P membrane obtained by cast process and dimensionally stabilised by a glass fiber.

FLAGON PVC WALKWAY has an anti-slip embossed upper surface.

FLAGON PVC WALKWAY protects roof membranes from damage caused by necessary foot traffic or accidental tool drops. This product is compatible with FLAGON PVC roof membranes and can be applied to new or existing roofs using standard hot air welding equipment.

FIELD OF APPLICATION

Designed for single-ply application on horizontal, FLAGON PVC WALKWAY is applied onto FLAGON PVC membrane.

APPLICATION METHOD

- Prior to install FLAGON PVC WALKWAY remove any loose debris and clean PVC roof membrane, then allow to dry prior to application of walkway, roll out and cut desired length and allow to relax while placing into the desired position,
- Use FLEXOCOL V adhere the entire surface and leave on each side minimum 50 mm free of adhesive and weld FLAGON PVC WALKWAY around the perimeter.

FOR COMPLETE INFORMATION ON PRODUCT INSTALLATION, PLEASE CONSULT YOUR SOPREMA REPRESENTATIVE.

PACKAGING

SPECIFICATIONS	FLAGON PVC WALKWAY
Thickness (EN 1849-2)	1.80 mm
Roll dimensions	20 m x 1 m
Roll weight (EN 1849-2)	2,15 kg/m ²
Rolls per pallet	23
Colour	Dark Grey

PROPERTIES

PROPERTIES	STANDARDS	FLAGON PVC WALKWAY
Tensile strength	EN 12311-2	≥ 9.0 N/mm ²
Elongation to break	EN 12311-2	≥ 200 %
Tear resistance	EN 12310-2	≥ 160 N
Resistance to static punching	EN 12316	> 20 kg
Cold bending	EN 495-5	≤ - 25°C
Behaviour under hydrostatic pressure (6 hours at 0,5 Mpa)	EN 1928 method B	Waterproof
Dimensional stability after 6 hours at 80°C	EN 1107-2	≤ 0.1%
Resistance to artificial weathering	EN 1297	No cracking
Resistance to root penetration	CEN TS 14416	no penetration
Fire resistance	EN ISO 11925-2 / EN 13501-1	E



SOPREMA.COM.AU • +61 (3) 9221 6230

TDS_FLAGON_PVC_WALKWAY-09-2023_RA

1/2



ACCESSORY
PRODUCTS

APPLICATIONS

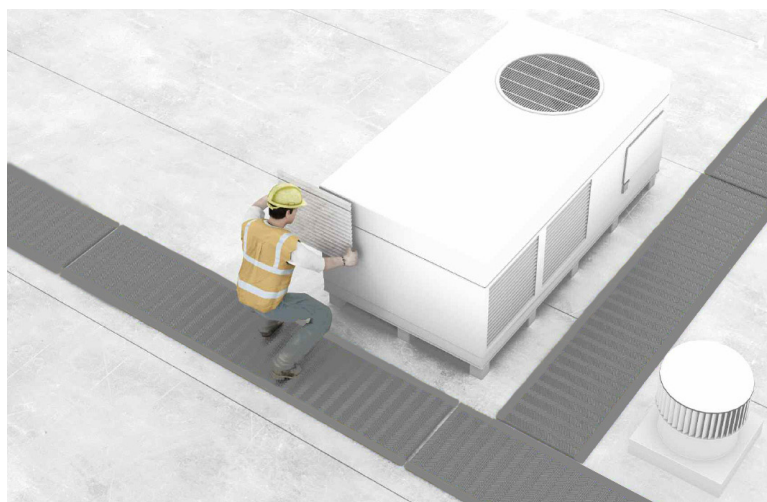
ROOFS

FLAGON PVC WALKWAY

TECHNICAL DATA SHEET

ANZ-TDS-77-FLAGON PVC WALKWAY

TYPE OF APPLICATION



STATEMENT OF RESPONSIBILITY

The technical information and application advice given in this publication is based on the present state of our best knowledge. As the information herein is of a general nature, no assumption can be made as to a product's suitability for a particular use or application and no warranty as to its accuracy, reliability or completeness either expressed or implied is given other than those required by Commonwealth or State Legislation. The owner, their representative and/or the contractor is responsible for checking the suitability of products for their intended use.



SOPREMA.COM.AU • +61 (3) 9221 6230

2/2

TDS_FLAGON_PVC_WALKWAY-09-2023_RA