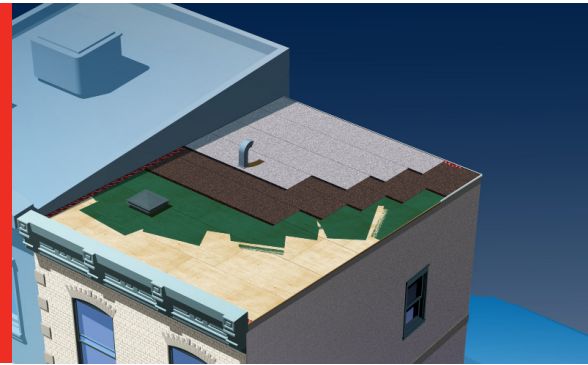


SA BASE

BASE SHEET MEMBRANE



Self-adhesive base sheet membrane used in the sealing of two-ply roofing systems.

- When the membrane is adhered directly to plywood and used in combination with SA CAP FR GR, it is a unique self-adhesive system, UL 790, Class A classified.
- Excellent dimensional stability
- Durable

PRODUCT PURPOSE

Application	Waterproofing	
Building Part	Roofing	
Types of slope	Low slope	Very low slope
Substrates	Plywood	OSB
	Cement	Asphaltic panel

PRODUCT CHARACTERISTICS

Technology	SBS modified bitumen
Surface	Sand
Underface	Silicone release film in two parts (split-back)
Reinforcement	Glass Mat
Installation Method	Self-adhesive
Service temperatures	-40 ° to 194 °F (-40 °C to 90 °C)

CONDITIONING

Code	Width		Length		Thickness		Net Area		Brute Area		Units (per pallet)
	m	in	m	ft	mm	mil	m ²	ft ²	m ²	ft ²	
07022	1	39	15	49	2.2	88	13.6	146	15	159	16




PROPERTIES

Properties	STANDARDS	SA BASE
Tensile strength, MD/XD (73 °F)	ASTM D5147	10.5 /13.1 kN/m (60 /75 lbf/in)
Elongation at peak load, MD/XD (73 °F)	ASTM D5147	3 / 3%
Tear resistance, MD/XD	ASTM D5147	356 / 356 N (80 / 80 lbf)
Cold bending	ASTM D5147	< -18 °C (0 °F)

(All values are nominal)

SA BASE

INSTALLATION

Storage	Rolls should be stored upright, tape side up. If the products are stored outdoors, cover them with an opaque protective cover after removing the delivery packaging. Can withstand frost, but must be reactivated for 24 hours to at least 10 °C (50 °F) prior to installation.		
Minimum Application Temperature	10 °C (50 °F)		
Complementary Products	EXTERIOR PRIMER	OR H ₂ O PRIMER	
Tools required	 Knife		Tape measure
	 Smoothing roller		
Surface Preparation	The substrate must be clean, dry and free of dust, grease or other contaminants.		
Installation	<ol style="list-style-type: none"> 1. If conditions require, prepare the substrate with EXTERIOR PRIMER or H₂O PRIMER. 2. Position the membrane parallel to the edge of the roof, leaving about 8 cm (3 in) beyond the front where the gutter will be installed. If the gutter is in place, install the membrane from the roof edge. 3. Remove the protective film on the back in a length of about 30 to 40 cm (12 to 16 in) and fold the protective film 45 degrees on each side. Adhere the exposed portion to the support. 4. While applying pressure to the other end of the membrane, gradually remove the protective film using a scrubbing brush (or other accessory), press the membrane firmly to the support while continuing to remove the protective film. First press the membrane in the center, and then to each side. 5. Apply further pressure on the membrane using a heavy roller to ensure adhesion between the support and the membrane avoiding formation of bulges, folds or gaps. <p>Note: The transverse overlap should be 150 mm (6 in) and have a longitudinal overlap of 75 mm (3 in). Refer to ROOF SYSTEM INSTALLATION for waterproofing membrane installation to roof details and upstands.</p>		
Recommendations/ Limitations	It is not recommended to use a product containing bitumen directly on softwood boards or flexible polyvinyl chloride.		

